



1888

Handwritten text in a cursive script, likely a historical document or letter. The text is dense and covers most of the page.

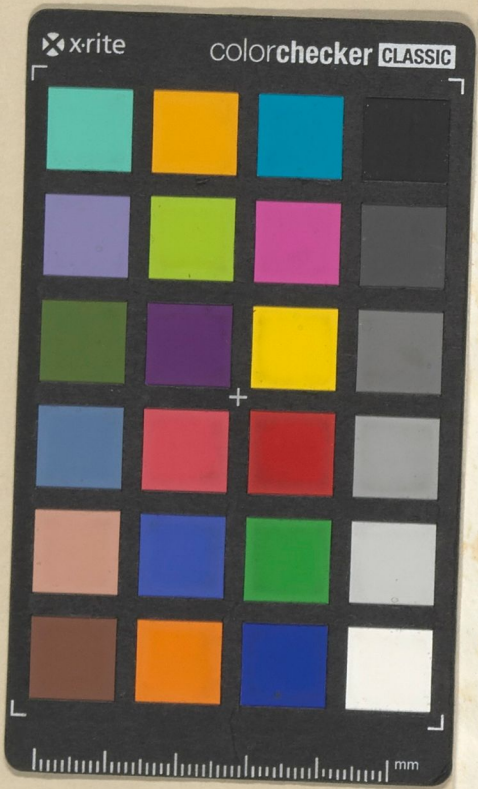


Handwritten text at the bottom of the page, possibly a signature or a closing line, including a large decorative initial.



Motaco 3 (81)





LXXXI

**A** Anno dñice nati. Gristo dñice Cuius octavo. Indie salu. die quato  
 cimo ext nouet. In memon pntati dñe Johis d'altualis magri ometonu custodis ibi  
 rest Joh. magri schestellus archiepiscopus emonen. cu sensu pnti magri martini d'ail lu  
 aa. 7 dnoy Gullu aduocati 7 comitis beneplac. 7 ymeria aprie. magri pntoni. zaldouindi d'prie.  
 7 ymeris d'fesse. 7 ymeria aduocati ibi maioris pntis pntia maior ecclie emonen. Inuestiu dñm  
 Gullm hugolu uic sa dñmi z quacatu hugolu ecclie uic ei nepote. Anstul. nouiti d'ima pte tie iudic  
 ad uic mantencat. Juonem 7 bura luga. pte octo. cui colnt. Abima pte abbas d'bonota. Abili  
 amadeus gobbis. 7 iduabz pntibz uia. d'qui pte tie isti Inuestiu itiqz eoz 7 solidu. pntu auxilio  
 noue qstie. pnti iste dno supite noue amon emonen solue. in uita noue facti d'quallibz pntia 7 fe  
 ste sa mich. ultra factu q' suctu d'ce pte tie pnti forma can' acqst. loco d'ame 7 noue d'ame 7 p  
 decima d'ce pte tie. duodeca pte. H pnti. ut sub pte d'pnti d'ci facti 7 d'pnti omni eoz inde facti. ita  
 q' itaqz cu effectu pte z exigi possit. ut eadem auxilio suo 7 ellet dnoy canon. Ita q' hie pnti  
 Inuestiu d'aim tium tenet sic sua sine usque iudic pte. eo saluo q' isti Inuestiu sint absoluiti  
 7 decima qua pnti tenentur d'ce amon iste d'ista tu.

**I**n Co Juonius d' mullasimus pntis salu pntis. In fua 7 hac car pntis pntis.



Merbeio 3 (81)

