

Martin Luther University Halle-Wittenberg

# Open Science Policy

**Contact:**

Martin-Luther-Universität Halle-Wittenberg  
University and State Library of Saxony Anhalt  
August-Bebel-Straße 13  
06108 Halle (Saale)  
E-Mail: [direktion@bibliothek.uni-halle.de](mailto:direktion@bibliothek.uni-halle.de)  
Tel: +49 345 55 22001

**Publisher:**

University and State Library of Saxony Anhalt

The online version of this publication can be found under the following DOI:  
<http://dx.doi.org/10.25673/117053>

This text is available under a Creative Commons license “Attribution 4.0 International” (CC-BY 4.0): <https://creativecommons.org/licenses/by/4.0/>

**Illustrations:**

- p 4: Uni Halle / Markus Scholz
- p 6: Jacobs et al.: Ruddlesden–Popper Oxyfluorides  $\text{La}_2\text{Ni}_{1-x}\text{Cu}_x\text{O}_3\text{F}_2$  ( $0 \leq x \leq 1$ ), Abb. 2  
<http://dx.doi.org/10.25673/116573>
- p 7: Schmidt et al.: Delineating organizational principles of the endogenous L-A virus by cryo-EM and computational analysis of native cell extracts,, Abb. 1  
<http://dx.doi.org/10.25673/116475>
- p 8: Schorn et al.: Tree demographic strategies largely overlap across succession in Neo tropical wet and dry forest communities, Abb. 2  
<http://dx.doi.org/10.25673/116505>
- p 9: Eambangyung et al.: DNA of Music, Abb. 2  
<http://dx.doi.org/10.25673/116088>
- p 10: Zeiss et al.: Effects of climate on the distribution and conservation of commonly observed European earthworms, Abb. 2  
<http://dx.doi.org/10.25673/116070>
- p 11: Zheng et al.: Effects of plant diversity on productivity strengthen over time due to trait-dependent shifts in species overyielding, Abb. 3  
<http://dx.doi.org/10.25673/116064>

Martin Luther University Halle-Wittenberg

## Open Science Policy

Resolution of the Academic Senate on the 6th of March 2024





## 1. Objectives and Principles

(1) The term Open Science encompasses several aspects such as Open Access, Open Research Data and the data management, open research processes, open source code, and open educational resources (OERs). The aim of Open Science is to make, to the extent permitted by law, scientific data and results open, accessible and reusable in accordance with the *FAIR principles*<sup>1</sup> and the *Model Policy on Open Science for Research Performing Organizations (RPOs)*<sup>2</sup>. This promotes the transparency and trustworthiness of research and the efficient dissemination of research results in line with good scientific practice<sup>3</sup>.

- 1 Wilkinson, M. D., Dumontier, M., Aalbersberg, I. J., et al. (2016). The FAIR Guiding Principles for scientific data management and stewardship. *Scientific Data*, 3(1), 1-9; Mons, B., Neylon, C., Velterop, J., et al. (2017). Cloudy, increasingly FAIR; revisiting the FAIR Data guiding principles for the European Open Science Cloud. *Information Services & Use*, 37(1), 49-56. See also: <https://www.ccdc.cam.ac.uk/solutions/about-the-csd/fair-data-principles> (Online-Access: 02-01-2024)
- 2 <https://www.openaire.eu/model-policy-on-open-science-for-research-performing-organisations> (Online-Access: 02-01-2024)
- 3 [https://www.verwaltung.uni-halle.de/KANZLER/ZGST/ABL/2024/24\\_01\\_01.pdf](https://www.verwaltung.uni-halle.de/KANZLER/ZGST/ABL/2024/24_01_01.pdf) (Online-Access: 22-01-2024)



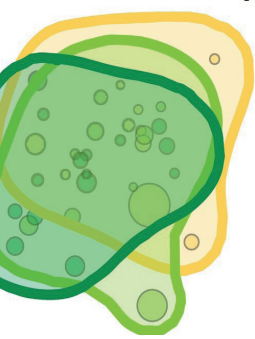
## 2. Responsibilities and Implementation

- (1) The MLU sees it as its mission to implement barrier-free **access to research results and data**. This includes advice on indexing, quality assurance, curation and provision of data and results as well as their archiving. In doing so, the MLU seeks to balance between free access to data and results, and the protection of primary data with regards to research results that have not yet been published, legal data protection regulations and personal rights or the pursuit of transfer activities based on intellectual property rights. The MLU provides a suitable framework for this and has established a separate track in its global budget for this purpose.
- (2) The implementation of the Open Science Policy is monitored by the Research Commission of the University's Academic Senate (hereinafter referred to as the "Research Commission"), which has set up its own Open Science working group for this purpose, which includes representatives from various scientific disciplines and other institutions supporting Open Science such as the University and State Library (ULB), the Center for Multimedia Teaching and Learning (LLZ), the University Archive and the IT Service Center of MLU (ITZ) and from national networks with relevance to Open Science such as the National Research Data Infrastructure (NFDI<sup>4</sup>).

<sup>4</sup> <https://www.nfdi.de/> (Online-Access: 02-01-2024)

- (3) The Research Commission convenes the Open Science working group. The group evaluates the implementation of the Open Science Policy. It develops proposals for the ongoing disciplinary and infrastructural adaptation of the University's internal and interdisciplinary management of research outputs and data to new challenges and developments. The Open Science working group's recommendations are then presented to the Academic Senate of the university via the Research Commission.
- (4) The MLU offers its researchers storage solutions for their research data upon request. The term "researchers" includes members and affiliates according to §§ 3 - 5 of the University's basic regulations as well as scholarship holders who are temporarily involved in research at the MLU or who use and benefit from the MLU's infrastructural resources on a guest basis. It advises via its central structures (ULB, ITZ, University Archive) on the options of using suitable discipline-specific solutions (subject repositories), on the digitization and archiving of research results and data as well as on the creation of data management plans and the estimation of data management costs. The resource requirements for storage-intensive and sophisticated solutions as well as for third-party-induced storage obligations are secured via data management plans and form the interface to MLU's digitization strategy<sup>5</sup> in the context of which a process for data storage and responsibilities is then set up.

<sup>5</sup> <https://www.uni-halle.de/universitaet/strategien>



- (5) The MLU ensures that **open access publications** and the associated research data can be found, reused and searched nationally and internationally. Researchers are generally identified by persistent identifiers<sup>6</sup>. MLU promotes the publication of scientific data and results of its scientists in open access journals and platforms that meet the standards of the respective subject areas and, if applicable, the requirements of third-party funders with regard to quality standards of scientific peer review and quality control and ensure that the published data and findings are recognized for qualification publications and proof of scientific success in the context of the respective subject area.
- (6) In addition to advice on *subject-specific solutions*, the university also offers a low-threshold option of publication via its own *repository* “**Share\_it**”. “*Share\_it*” is developed according to established standards and guarantees the storage, description and searchability as well as the registration and dissemination of stored scientific data and publications.
- (6.1) The storage and archiving of research results and data through “Share it” supports the inclusion of qualification publications, open access publications and other digitally recorded materials<sup>8</sup>. Research datasets, documentation and software (source code) from projects carried out with the collaboration of MLU scientists that are linked to publications in scientific works are also included.

<sup>6</sup> <https://plymouth.libguides.com/research/identifiers> (Online-Access: 02-01-2024)

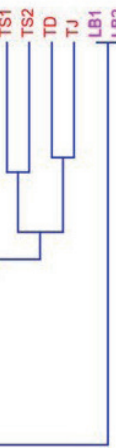
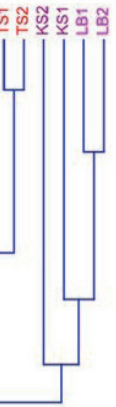
<sup>7</sup> <https://opendata.uni-halle.de> (Online-Access: 02-01-2024)

<sup>8</sup> <https://opendata.uni-halle.de/community-listDatasets>

Datasets stored in the “Share\_it” repository are provided with a persistent identifier (DOI). Data records totaling up to 500 GB that are available in one of the standard supported file formats<sup>9</sup> are stored in the MLU’s digital long-term archive without any further requirements. Data sets that are more extensive or contain file formats that pose a security risk or are foreseeably no longer supported will be stored, if necessary, in separate subject repositories after consultation.

- (6.2) Research data is prepared and made available by the researchers in such a way that it is compatible with the relevant subject-specific standards, the principles of research ethics and the guidelines and recommendations of the relevant professional associations and funding bodies. Data sets are recorded in accordance with common **metadata standards** - insofar as they are not created within the university (Share\_it) - and made available for reuse. Standardizations, such as those developed by the NFDI, are taken into account by providing advice on the semantics and ontology of the metadata. The contact institution for this is the ULB.

<sup>9</sup> [https://opendata.uni-halle.de/DatenFormate\\_Share\\_it\\_2020\\_DE.pdf](https://opendata.uni-halle.de/DatenFormate_Share_it_2020_DE.pdf) (Online-Access: 22-01-2024)



### 3. Further Regulations

- (1) Data that is linked to **third-parties** or subject to IPR (Intellectual Property Rights) regulations or some other contractual regulations on the ownership of data are treated separately. Access and usage rights for such data sets are secured separately with the third-party data holders. Data protection regulations, in particular with regard to the anonymisation of sensitive data are taken into account here.
- (2) When the MLU applies for third-party funding projects and when designing projects in the context of graduate programs, the personal expenses and others costs for the curation, storage, and administration of research data must be recognized and considered financially insofar as this is permitted by the third-party funding provider.
- (3) The MLU supports the development of **open source software** as a valuable contribution to scientific advancement. The developed code and computer programs are provided with a suitable open source licence for codes and computer programs, which regulates the conditions for use by third parties.

Software developed as part of research projects or resulting from them can be made available via MLU repositories such as GITLAB<sup>10</sup> or GITHUB<sup>11</sup>, or other access points and persistently identified with DOIs, provided there are no other contractual intellectual property rights (IPR).


- (4) In accordance with the UNESCO recommendation on **Open Educational Resources** (OERs<sup>12</sup>) adopted in 2019, all member states should support these and make publicly funded educational materials available. OERs enable licence-regulated access as well as the use, editing and redistribution of educational materials by others. At colleges and universities, OERs make a substantial contribution to the digitalisation of teaching and promote an open and cooperative teaching, learning and examination culture. The MLU therefore recommends using, creating and publishing OERs on existing OERs platforms. The interface to the Senate Commission for Studies and Teaching is responsible for specifying how these materials are to be provided and delivered, e.g. in the form of “Massive Open Online Courses” (MOOCs).

<sup>10</sup> [https://gitlab.informatik.uni-halle.de/users/sign\\_in](https://gitlab.informatik.uni-halle.de/users/sign_in) (Online-Access: 02-01-2024)

<sup>11</sup> <https://github.com/uni-halle> (Online-Access: 02-01-2024)

<sup>12</sup> [https://www.unesco.de/sites/default/files/2020-05/2019\\_Empfehlung%20Open%20Educational%20Resources.pdf](https://www.unesco.de/sites/default/files/2020-05/2019_Empfehlung%20Open%20Educational%20Resources.pdf) (Online-Access: 02-01-2024)





If you have questions, please do not hesitate to contact the Open Science Team of the University and State Library:

[openscience@bibliothek.uni-halle.de](mailto:openscience@bibliothek.uni-halle.de)

Information on the Open Science Services of the University and State Library, publishing as well as research data can be found at:

[bibliothek.uni-halle.de/forschen-publizieren](http://bibliothek.uni-halle.de/forschen-publizieren)

