

# DESIGN

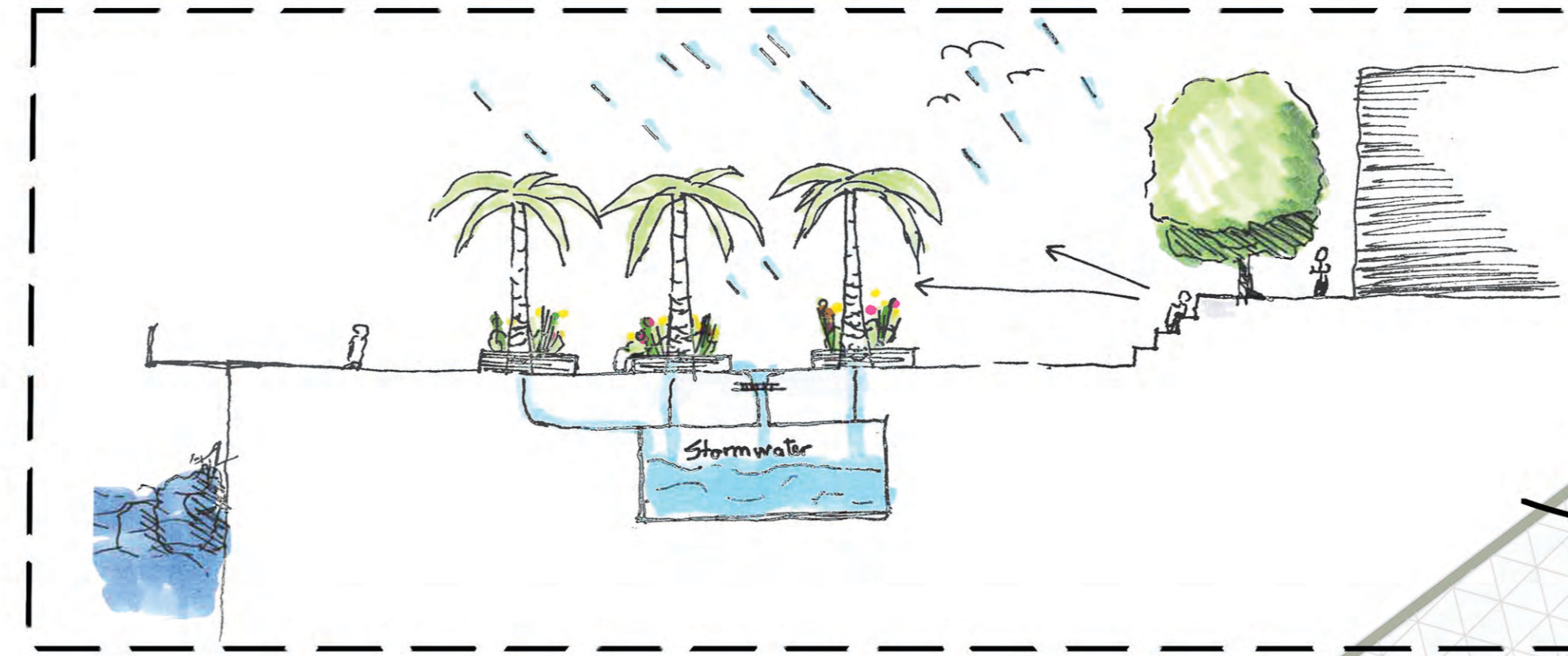
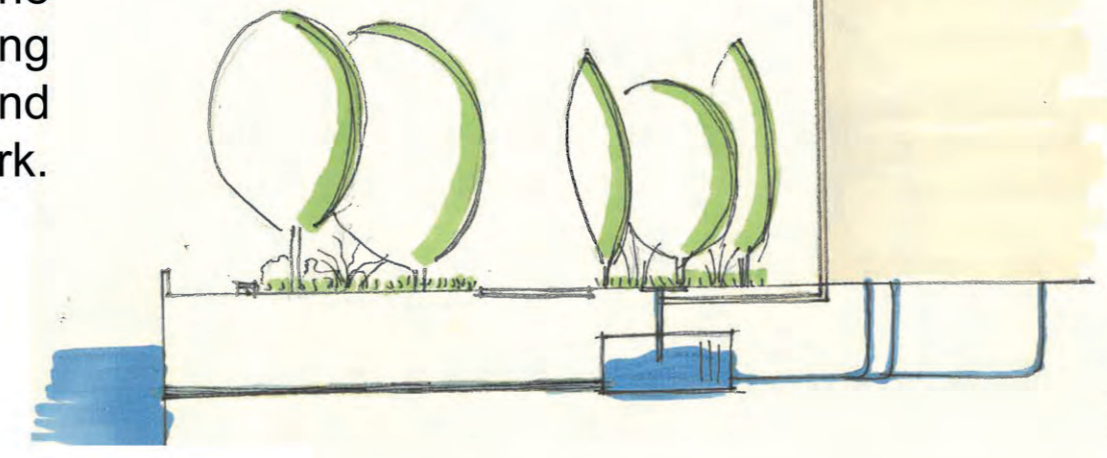
## SOLUTIONS

There are many different types of wwt technologies in 3 levels yet not all of them are applicable for Cyprus. These are; physical, biological and chemical treatments.

The biggest treatment plant in North is Haspolat bi-communal WWTP, shared by both communities.

For North Cyprus MBR based systems are recommended for medium and small scale projects as solution to the water problem on the island. Apart from city applications, Waste Water Gardens are highly recommended in rural areas in order to store the stormwater for agricultural usage. The cost of the system is affordable and can provide high capacity of storage in case of heavy rains occurring on the island.

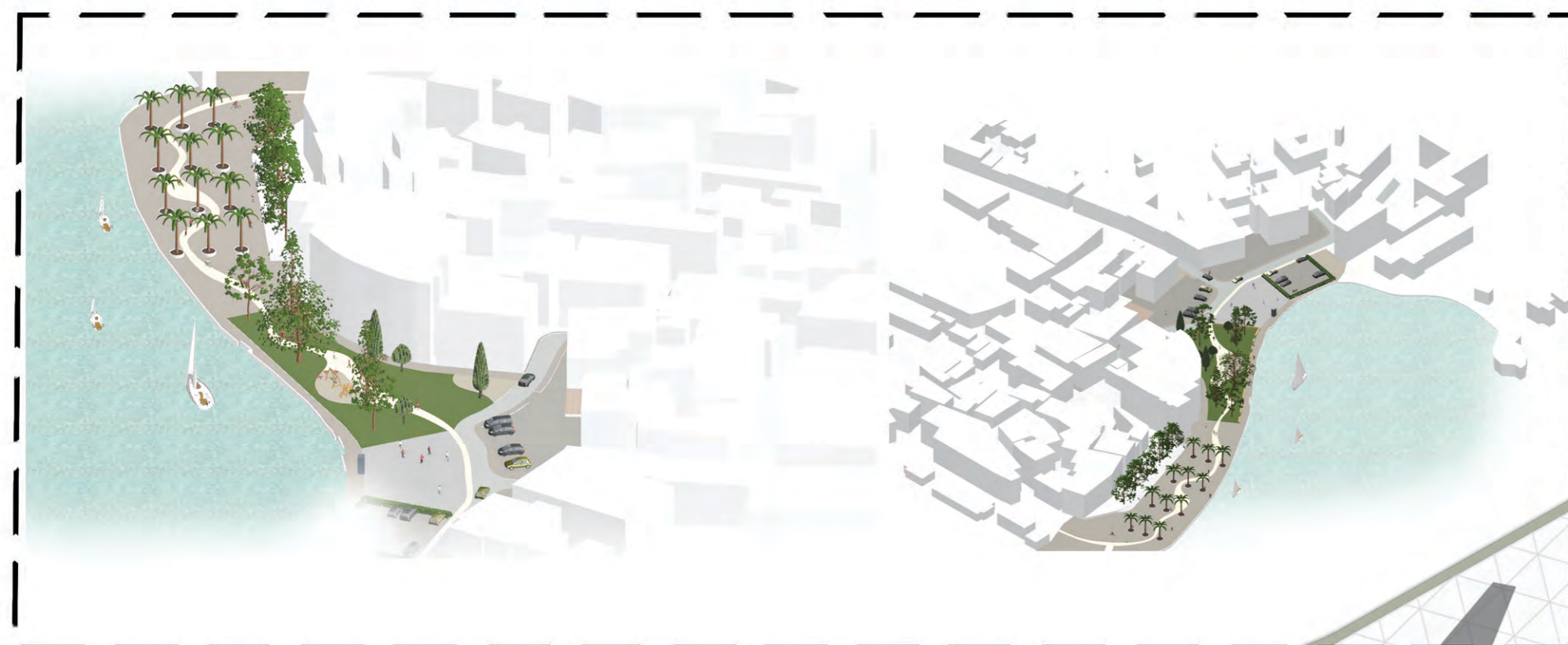
The idea of the system is to collect the waste water from the surrounding buildings, cleaning in the MBR tank and use the water for the irrigation of the park.



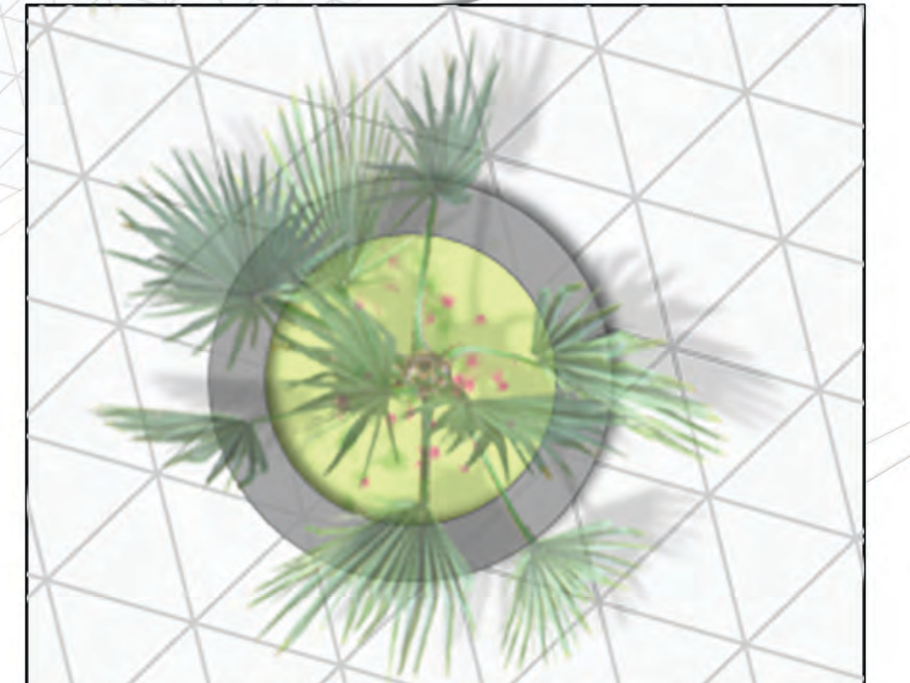
Here you can see some 3d models of the new designed Kyrenia Park. Due to its high tourist number, most of the park is designed to be hard surface with sitting possibility under shadow.



Bird eye view plan



## DETAILS



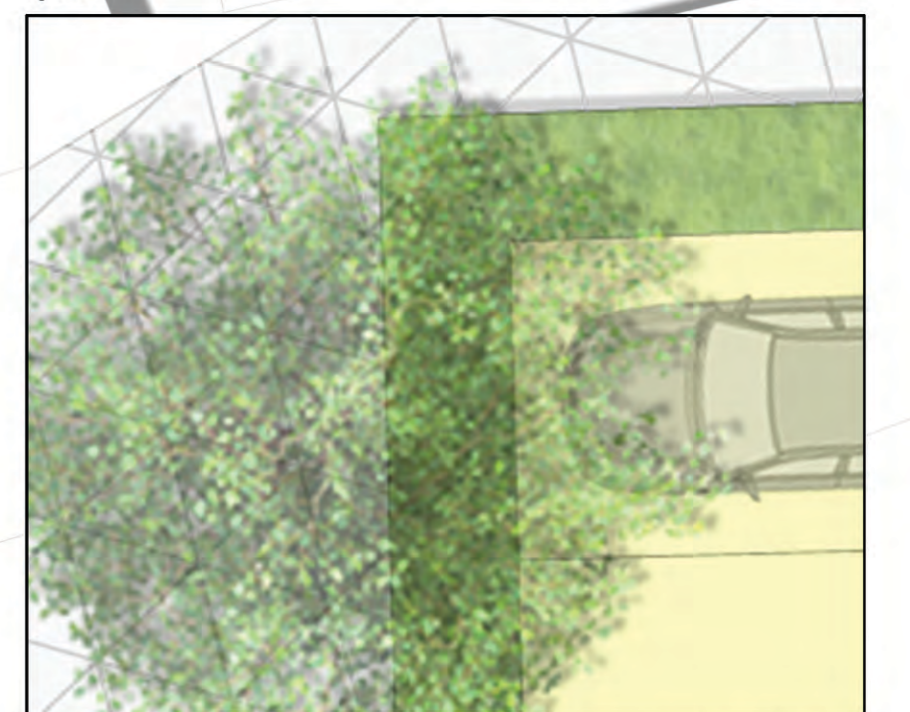
For round benches, wood material for sitting part and concrete for raised bed are used because of high sun emittance, sitting on concrete benches may hurt. The palm trees create shadow and represent the native vegetation.



Concrete sitting stairs under Quercus ilex serve as a connection between harbour and the city at the same time as a pleasant resting area.



Benches in the park planned as wood and concrete which is in harmony with the benches framing the corner of the park.



The parking lots are surrounded with 1 meter hedges and under large trees. The dense hedges will provide sound isolation.