

IV, 19.

Va

221





IV, 19.





*Nachlese*

zu

*Polycarp Samuel Wagners*

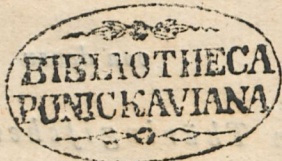
*Nachricht*

von denen

*Sächsischen Thüringischen und Meißnischen*

*Groschen.*







Chur-Sachsische Groschen Nachlese

Tab. I.



Christian Philipp Lindemann sculpsit Dresdae 1744.



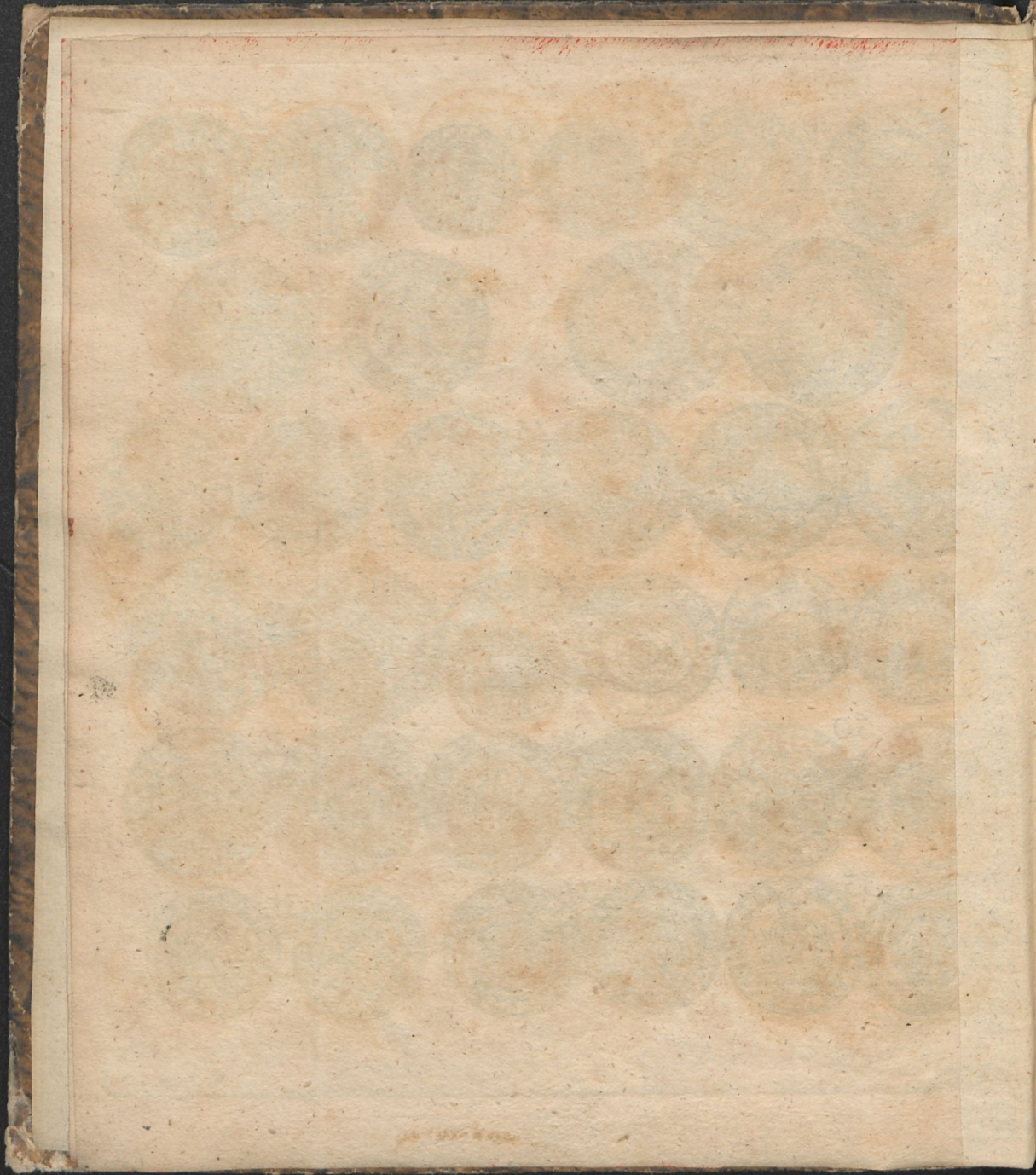
Christoph Friedrich Gumboldt











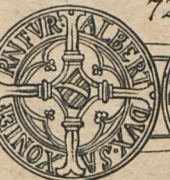
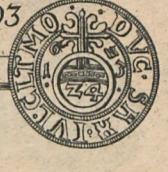
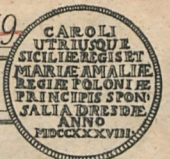




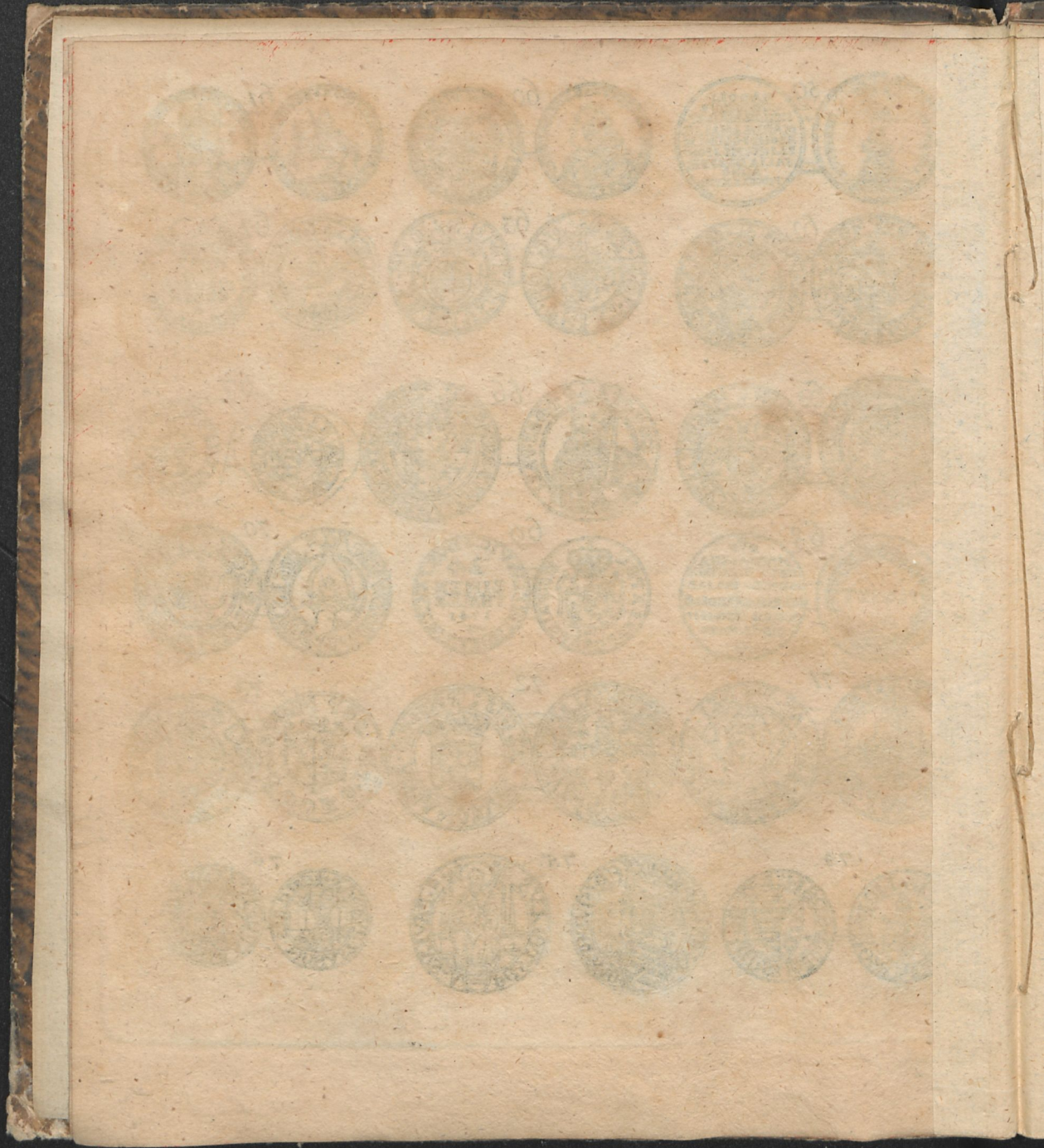




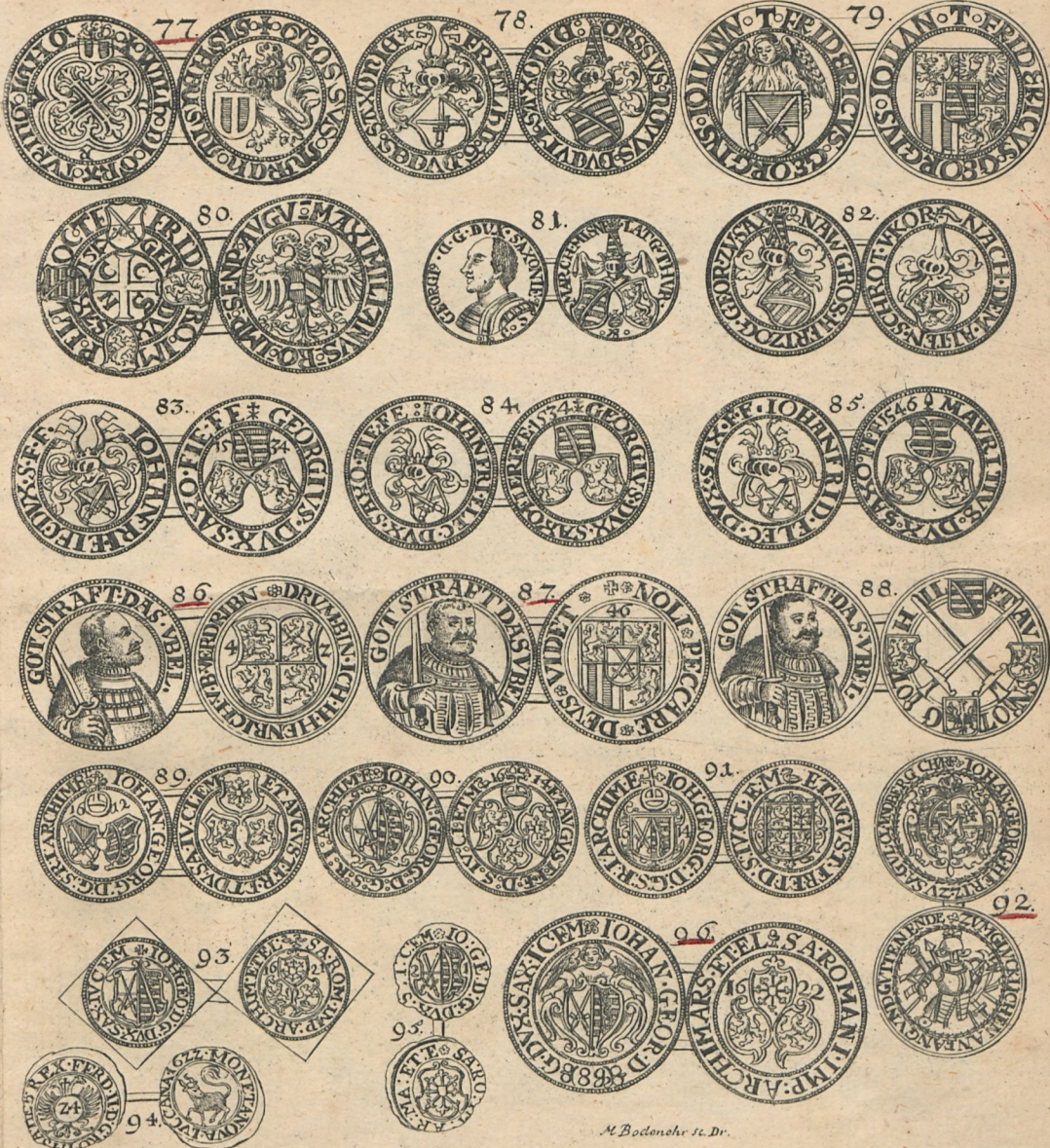












N. Bodenschr. sc. Dr.







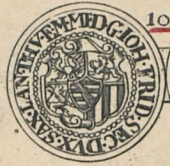




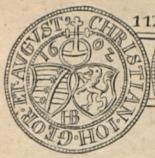
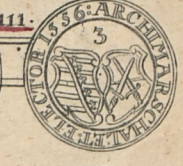
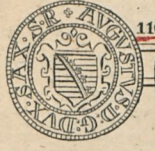
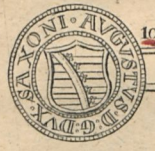
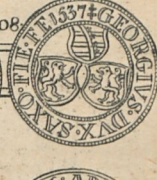
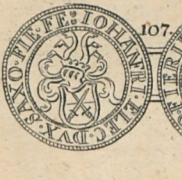
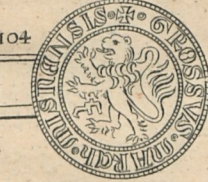
97. AVGVSTVS III. REX POLONARVM MAGNVS ELECTVS. OCT. MDCCXXXIII. CORONA XVIII. AN. MDCCXXXIV.



99. LUDOVIC DELPHIN ET CHARLES SEPTIEME REG. POL. PRINCE CONNUBIVM DRESDAE MDCCXLVII



103.











115.



118.



121.



124.



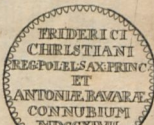
126.



134.



127.



135.



116.



110.



122.



125.



128.



136.



117.



120.



123.



129.



130.



132.



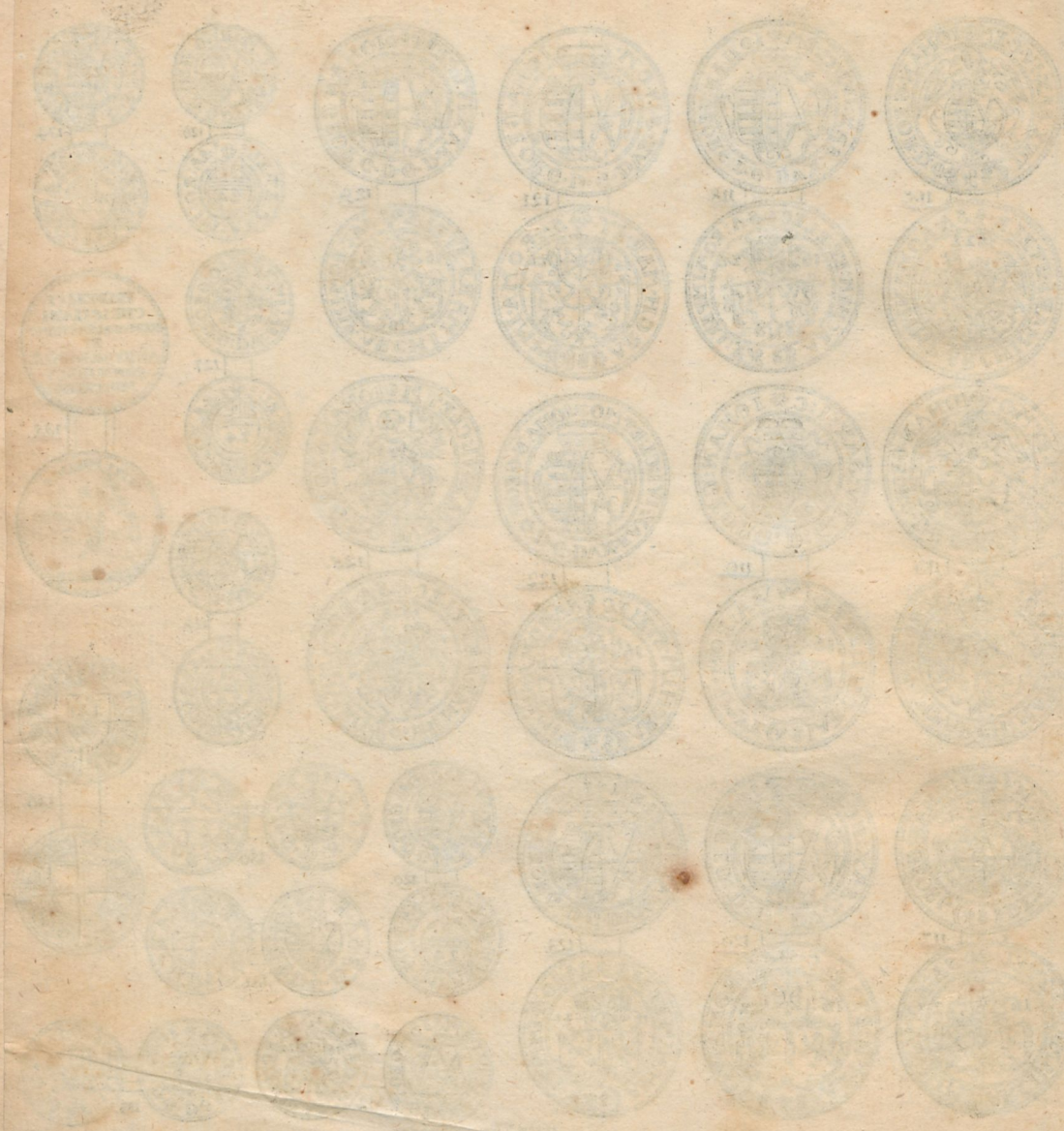
131.



133.

Pöschel sculp.











1071A





































































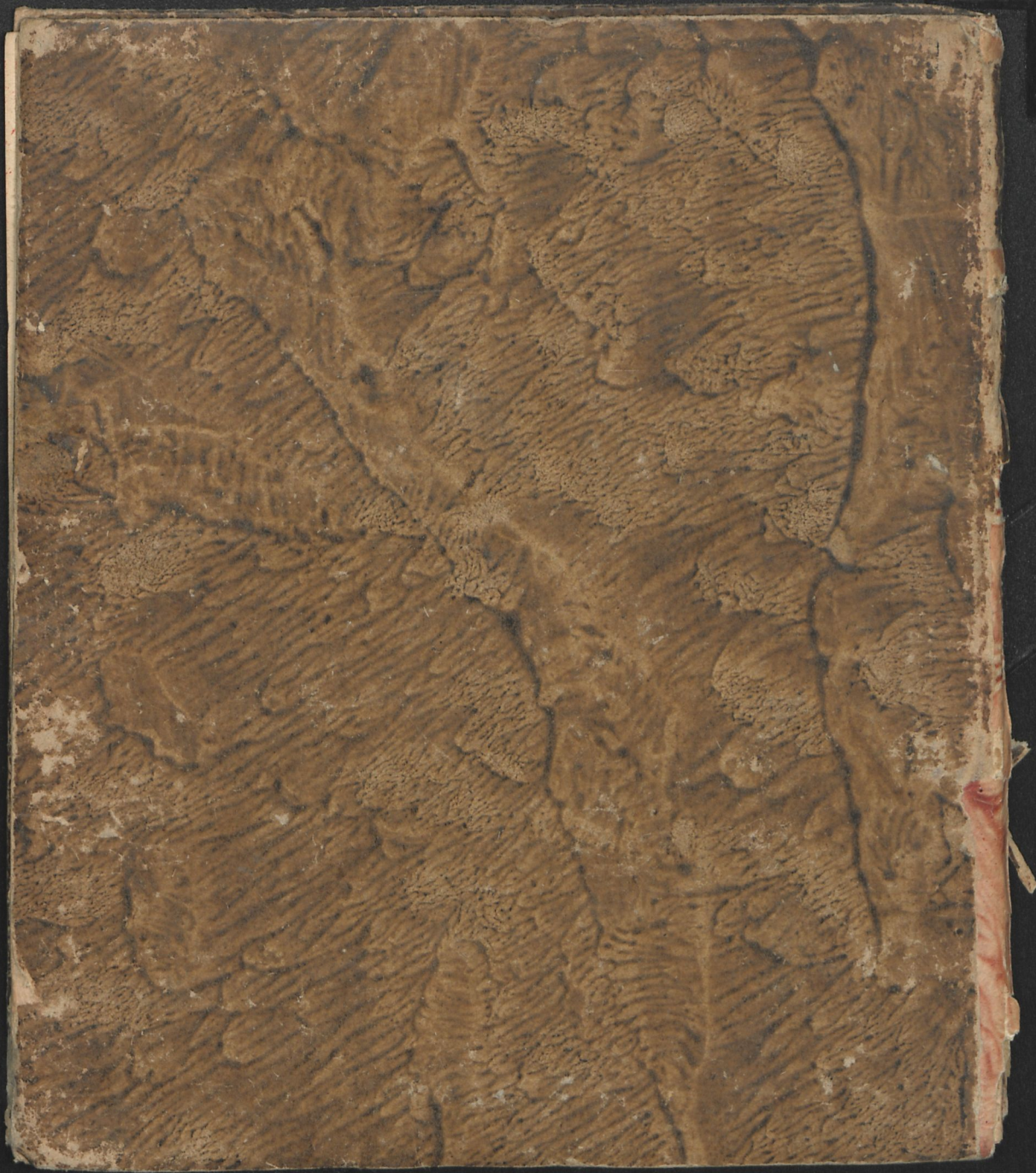
Va. 224. 8

(x225.7659)

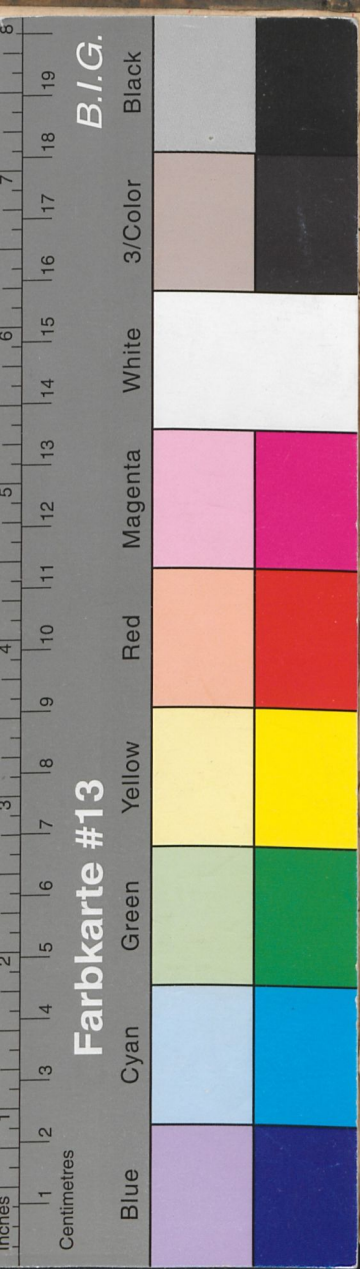
V077-00

nif









B.I.G.

Farbkarte #13

Blue Cyan Green Yellow Red Magenta White 3/Color Black

*Nachlese*

zu

*Polycarp Samuel Wagners*

*Nachricht*

von denen

*Sächsischen Thüringischen und Meißnischen*

*Groschen.*