

Zu 7/6 5/7

GEORGIO  
CHRISTOPHORO  
LICHTENBERG

PHILOSOPHIAE PROFESSORI  
DIGNISSIMO

ARTIVM MAGISTRO  
RECENS CREATO



---

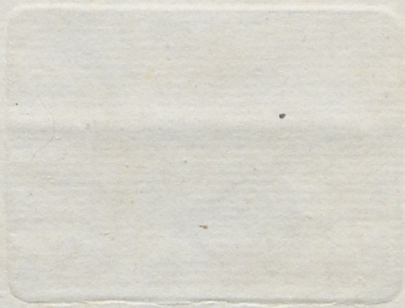
GOTTINGAE D. IV. IAN. MDCCLXXIX.

---

AERE THEODERICIANO.



GEORGIO  
CARLO OTTAVIO  
MANTOVANO



---

Ἦφειλε μὰν χωρεῖν κατὰ νοῦν Τεόν, ὧν ἐπιθυμεῖς  
Ἄλλ' ἐπὶ Σοὶ νῦν ἄσομ' ἐγὼν τάδε· εἷς γὰρ ἄριστος,  
Εὐγνώμων, φιλόμωσος, ἔρωτικὸς, εἰς ἄκρον ἀδύς,  
Εἰδὼς τὸν φιλέοντ', αἰτεῦμενος οὐκ ἀνανεύων,  
Οἷα χρὴ τὸν ἑταῖρον.

THEOCRITVS

---

*Ecce Professores, \* vincituri tempora Lauro,  
Ter duo, Musarum templa sacrata petunt!  
Ergo non satis est, peragrarè fideliter Orbem,  
Luciari et rapidis fluctibus Oceani?  
Non satis est, famam post mortem spargere scriptis,  
Magnorum et viuos ire per ora Virum?*

\* Suis singuli nominibus et scriptis clari: *Ioannes Fridericus Gmelin* et *Ioannes Fridericus Blumenbach*; *Medicinae Doctores et Professores: Georgius Christ-*  
sto-

Scilicet hoc superest laudis: dextro omine docta  
Praemia KAESTNERI digna tulisse manu.

Felices nimium! quos inlyta gloria quaerit,  
Et fouet exceptos intemerata sinu.

Hos inter meus est, longe carissimus vnus,  
LICHTENBERG, meritis clarus et ingenio.

Ite, mei versus, exponite gaudia — desunt  
Commoda verba mihi — quaerite, Musa dabit;

Prodite, liberius quem coram dicere, amorem,  
Sustinuit nondum rusticus ille pudor —

Ite, bonum augurium, prosperrima tradite Vota,  
Ite, probate Fidem, pignus amicitiae.

*Stophorus Lichtenberg, Christophorus Meiners et Ioannes Matthias Sprengel:  
Philosophiae Professores, Goettingenses omnes, et denique Georgius For-  
ster, Professor Cassellis nuper designatus, Patris, pluribus nominibus Ce-  
leberrimi, itinerum Comes fidus et ipse Periegeta, Oceani circumflui Insulas*

*alio qui sole tepentes,  
Qui mores hominum multorum vidit, et urbes,*

---

*27/8 5/7*

# MARCO GIORGIO PHORO ENBERG

PROFESSORI  
SSIMO

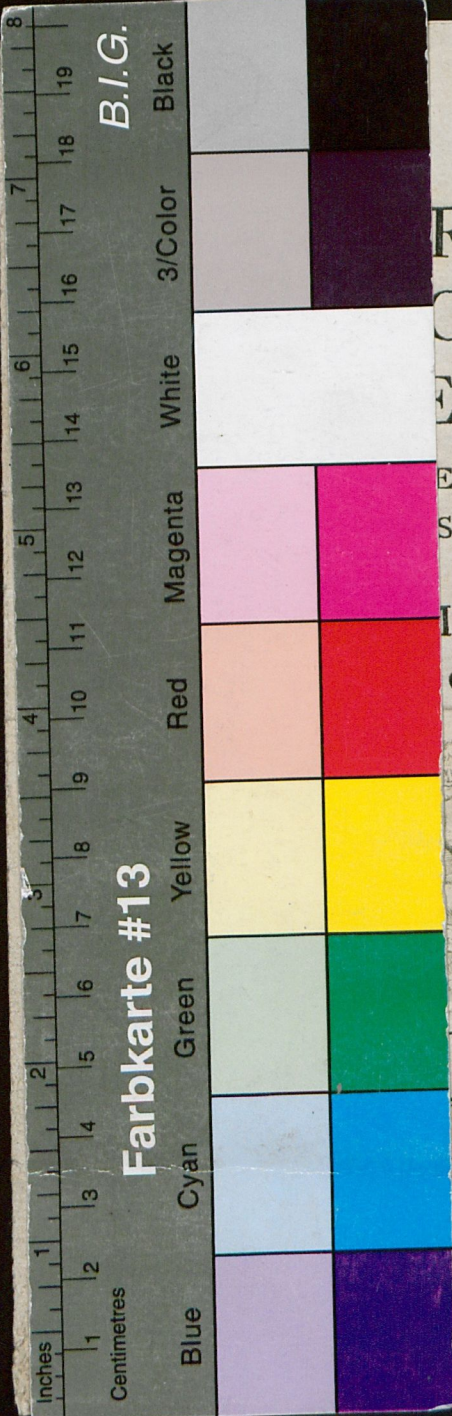
MAGISTRO

CREATO



IAN. MDCCCLXXIX.

DERICIANO.



B.I.G.

Farbkarte #13

Centimetres

Blue  
Cyan  
Green  
Yellow  
Red  
Magenta  
White  
3/Color  
Black