


SHORT REPORT

Open Access



PET/CT-based adaptive radiotherapy of locally advanced non-small cell lung cancer in multicenter yDEGRO ARO 2017-01 cohort study

Matthias Mäurer^{1*} , Lukas Käsmann², Daniel F. Fleischmann², Michael Oertel³, Danny Jazmati⁴, Daniel Medenwald⁵ and Young DEGRO Trial Group

Abstract

Background: Stage III non-small cell lung cancer (NSCLC) represents a highly heterogeneous disease and treatment burden. Advances in imaging modality show promising results for radiotherapy planning. In this multicentric study, we evaluated the impact of PET/CT-based radiotherapy planning on the prognosis of patients with stage III NSCLC.

Method and patients: A retrospective observational cohort study (ARO 2017-01/NCT03055715) was conducted by the young DEGRO trial group of the German Society for Radiation Oncology (DEGRO) with the primary objective to assess the effect of tumour volume change during chemoradiotherapy and the secondary objective to assess the effect of treatment planning on survival. Three hundred forty-seven patients with stage III NSCLC treated at 21 university centers between January 2010 and December 2013 were enrolled in this trial. Patients received primary curative chemoradiotherapy with an intended dose of 50 Gy (hypofractionated) or > 60 Gy (normofractionated). To assess the effect of radiotherapy planning modality on overall survival, we used multivariate frailty models. Models were adjusted for gross tumor volume at the initiation of therapy, age, sex, simultaneous chemotherapy, lung comorbidities, RT dose and tumor grade. By considering the random effect, we can account for heterogeneity in survival and considered covariates within the model in relation to the study side.

Results: Patients were predominantly male ($n = 269$, 78.4%) with mainly adenocarcinoma (56.4%) and an average of 67.2 years. Adaptation of radiotherapy with consecutive reduction of irradiation volume showed no significant disadvantage for patient survival ($HR = 1.21$, 95% CI 0.89–1.64). The use of PET/CT co-registration in radiation planning tended to result in better oncologic outcomes, although no significant association could be shown ($HR = 0.8$, 95% CI 0.56–1.16). Centers with a consistent planning strategy performed better than those without a preferred planning method (0.62, 95% CI 0.41–0.94).

Conclusion: A consistent planning strategy has positive effects on overall survival. The use of PET/CT-based adaptive radiotherapy planning shows a similar survival prospect with the prospective of lower treatment volumes. In future research, toxicities need to be analysed in order to assess such reasoning.

Keywords: Lung cancer, Non small cell lung cancer, PET/CT, Adaptive radiotherapy

*Correspondence: matthias.maeurer@med.uni-jena.de

¹ Department of Radiation Oncology, University Medical Center Jena, Jena, Germany

Full list of author information is available at the end of the article



© The Author(s) 2022. **Open Access** This article is licensed under a Creative Commons Attribution 4.0 International License, which permits use, sharing, adaptation, distribution and reproduction in any medium or format, as long as you give appropriate credit to the original author(s) and the source, provide a link to the Creative Commons licence, and indicate if changes were made. The images or other third party material in this article are included in the article's Creative Commons licence, unless indicated otherwise in a credit line to the material. If material is not included in the article's Creative Commons licence and your intended use is not permitted by statutory regulation or exceeds the permitted use, you will need to obtain permission directly from the copyright holder. To view a copy of this licence, visit <http://creativecommons.org/licenses/by/4.0/>. The Creative Commons Public Domain Dedication waiver (<http://creativecommons.org/publicdomain/zero/1.0/>) applies to the data made available in this article, unless otherwise stated in a credit line to the data.

Introduction

Lung cancer is the leading cause of cancer-related deaths worldwide [1, 2]. The prognosis for patients with locally advanced stage III non-small cell lung cancer (NSCLC) remains poor despite the use of modern immunotherapies [3–5].

One strategy to improve the prognosis is an optimization of tolerability of treatment by more precise irradiation methods [6, 7]. Technological improvements in recent years have enabled dose escalation with better tumor coverage and optimized sparing of normal tissues, resulting in a survival advantage with lower toxicity [8–10]. These techniques include intensity-modulated radiotherapy, adaptive image-guided radiotherapy and the use of ^{18}F -FDG PET/CT in radiation planning [11, 12]. In particular, information on metabolism provided by ^{18}F -FDG PET/CT can improve target volume definition and dose planning before and during radiotherapy (RT), enabling better selection of patients and individualization of therapeutic strategies [13, 14]. A systematic review and meta-analysis could demonstrate a relevant change in target volume definition in about 40% of NSCLC with the use of a planning PET/CT [15]. Accordingly, the multicentric PET-plan study showed a possible isotoxic dose-escalation for the use PET-guided RT [10]. The use of further PET-tracers like FMISO may additionally tailor individual (and possibly smaller) metabolic tumor volumes [16]. However, the reduction of target volume for dose escalation has to be carefully balanced with adequate coverage of the tumor. In the RTOG 0617 trial, high-dose chemo-RT with 74 Gy did result in adverse overall survival (OS) when compared with standard dose RT 60 Gy, the later RT strategy revealing better dose coverage of the target [17, 18].

Despite the new data on the treatment of NSCLC, it is unclear how the radiation planning strategy and the use of PET/CT for radiation planning affect local control and survival. In addition, it is not known when and how often PET/CT should be performed in the setting of chemoradiotherapy and whether it should be performed as staging PET/CT or in the RT planning position. In the present analysis, we evaluated the relevance of ^{18}F -FDG-PET-based radiotherapy planning on the prognosis of patients with stage III NSCLC in multicenter study including 347 patients.

Methods and patients

Study population, treatment and participating institutions

This retrospective observational cohort study (ARO 2017-01/NCT03055715) was conducted by the young DEGRO trial group (yDEGRO) of the German Society for Radiation Oncology (DEGRO). Twenty-one university centers for Radiation Oncology in Germany ($n = 17$),

Spain ($n = 1$), Switzerland ($n = 1$), Belgium ($n = 1$) and Austria ($n = 1$) participated in the trial. Data of $n = 347$ patients who received curative-intent radiation therapy with curative intent (\pm chemotherapy) between January 1st 2010 and December 31st 2013 were analyzed.

Inclusion criteria were (1) inoperable UICC stage III A or B NSCLC (adenocarcinoma or squamous cell carcinoma) confirmed by biopsy, (2) CT-based radiation treatment planning (PET- or PET/CT-based if available), (3) completed curatively intended radiotherapy \pm chemotherapy (planned total dose ≥ 60 Gy conventionally fractionated or ≥ 50 Gy hypo-fractionated) and (4) age ≥ 18 years. Patients with a secondary malignancy within 5 years prior to the diagnosis of the NSCLC and patients who received stereotactic body radiotherapy were excluded from the study.

Demographical, treatment, and clinical data was extracted from the patients' clinical records at the participating sites and was collected using electronic case report forms (eCRF) which were stored in the RadPlan-Bio data base of the German Cancer Consortium (DKTK) and the German Cancer Research Center (DKFZ) [19]. Written informed consent of all patients was available prior to data acquisition and analysis.

Statistics

To assess the effect of PET planning on overall survival we used multivariate frailty models. Models were adjusted for gross tumor volume (GTV) at the initiation of therapy, age, sex, simultaneous chemotherapy, lung comorbidities, RT dose and tumour grade. By considering the random effect, we can account for heterogeneity in survival and considered covariates within the model in relation to study side.

In another Cox regression models, we used 'study center' as predictor by forming four groups according to which method (no PET planning, PET co-registration, PET without co-registration) was the predominant choice of the respective center ($\geq 50\%$ of all cases planned by a one method). Center with no preferred method (no single planning method exceeding 50%) were merged to the fourth group.

In the models, we computed hazard ratios (HRs) with respective 95% confidence intervals (95%-CIs).

All analyses were performed with SAS, version 9.4.

Results

The study included equal numbers of stage IIIA and IIIB patients (Table 1).

RT was combined with concurrent chemotherapy (CHT) in 250 patients (72.2%), 96 patients (27.8%) received sequential chemoradiotherapy. 75 patients (30%) were treated with combined cisplatin-vinorelbine CHT,

Table 1 Sociodemographic patient and disease characteristics

	Patient number (%)
Sex	
Male	269 (78.4%)
Female	74 (21.6%)
Age	Mean (SD): 67.2 (10.7)
Pack years	Mean (SD): 38.2 (25.1)
UICC stage (7th edition)	
IIIA	174 (50.1%)
IIIB	173 (49.9%)
Histology ^a	
Adenocarcinoma	134 (39.2%)
Squamous cell carcinoma	193 (56.4%)
Grading	
1	7 (2.0%)
2	104 (30.0%)
3	120 (34.6%)
4	5 (1.4%)
na ^b	111 (32.0%)
T stage	
T1	32 (9.2%)
T2	63 (18.2%)
T3	106 (30.5%)
T4	144 (41.5%)
TX	2 (0.6%)
N stage	
N0	32 (9.2%)
N1	42 (12.1%)
N2	172 (49.7%)
N3	97 (28%)
NX	3 (0.9%)
Sequential chemotherapy	
Yes	96 (28.0%)
No	247 (72.0%)
Dose	Mean (SD): 63.5 (5.4)

^a Adeno carcinoma, squamous-cell carcinoma 2 well, moderate, poor, undifferentiated (1–4)

^b Not available

48 (19.2%) carboplatin-vinorelbine, 52 (20.8%) carboplatin-docetaxel, and 75 (30%) other chemotherapy doublet combinations.

In 314 (90.8%) patients' conventional fractionation was used, compared to 7 (2%) patients were treated with hyperfractionated regimens, and 5 patients (1.5%) undergoing a simultaneous-integrated boost (SIB) concept. 20 patients (5.7%) received other RT concepts.

In analysis of adaptive planning, no significant effect on survival was found for replanned cases when compared to cases with no re-planning (HR = 1.21, 95% CI

0.89–1.64, after covariate adjustment, Fig. 1, Table 1) (Table 2).

In the analysis of PET, cases with PET co-registration showed a similar survival rate as compared to cases without consideration of PET imaging (HR = 0.8, 95% CI 0.56–1.16 after covariate adjustment, Fig. 2, Table 1).

Analyzing centers according to the preferred planning strategy, we found that centers with no preferred method performed worse than those with a predominant planning method (0.62, 95% CI 0.41–0.94, after covariate adjustment, Fig. 3, Table 1). However, this finding is based on only one center in the mixed method group.

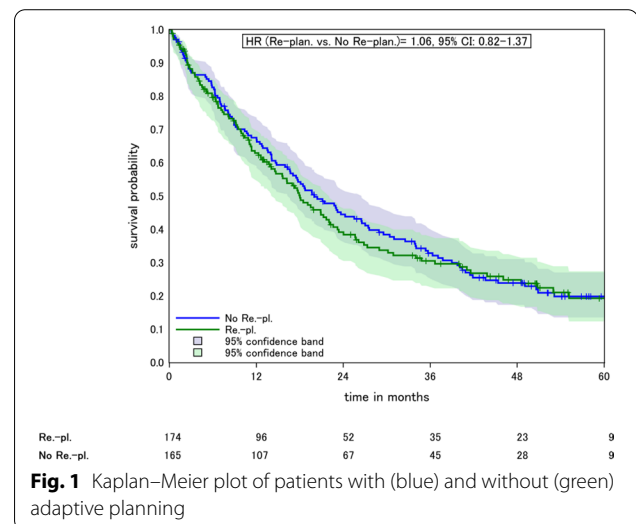


Fig. 1 Kaplan–Meier plot of patients with (blue) and without (green) adaptive planning

Table 2 Hazard ratios from frailty survival models using center as a random variable

	Crude ^a	Adj. ^b
Effect of re-planning		
No Re.-pl	Ref	Ref
Re.-pl	1.15 (0.84–1.57)	1.21 (0.89–1.64)
Effect of PET		
No PET	Ref	Ref
PET	0.85 (0.58–1.24)	0.91 (0.62–1.34)
PET coreg	0.76 (0.53–1.09)	0.8 (0.56–1.16)
Effect of PET usage in study centers		
PET coreg. versus No	0.83 (0.55–1.24)	0.72 (0.48–1.08)
PET coreg. versus PET	0.96 (0.63–1.46)	0.8 (0.54–1.19)
PET coreg. versus div	0.59 (0.37–0.94)	0.62 (0.41–0.94)

Adjusted for GTV1, age, sex, sim. Chemotherapy, lung comorbidities, RT dose, grade

^a "center" as random variable, Re.-pl. re-planning, coreg. coregistration, div. diverse planning strategies

^b Adj. for GTV1, age, sex, sim. Chemotherapy, lung comorbidities, RT dose, grade

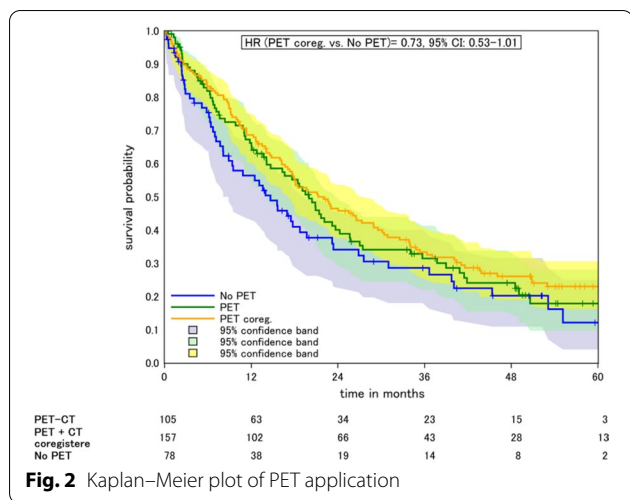


Fig. 2 Kaplan–Meier plot of PET application

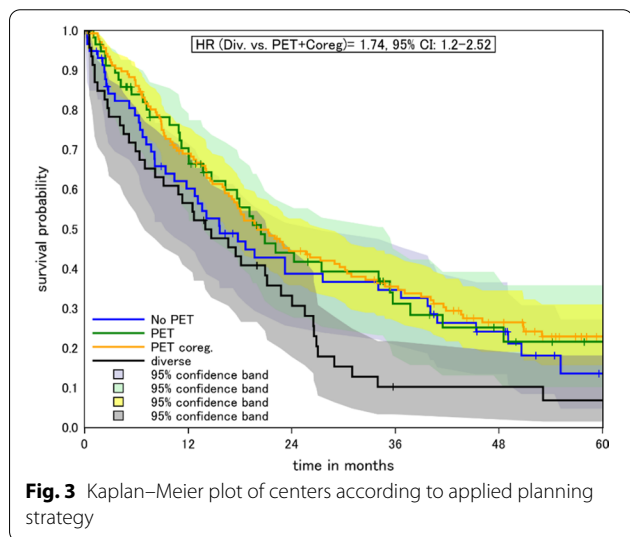


Fig. 3 Kaplan–Meier plot of centers according to applied planning strategy

Discussion

The present analysis demonstrates prognostic superiority of a consistent imaging strategy for advanced NSCLC. Our results confirm non-inferiority of target volume reduction in terms of outcome and therefore encourage PET/CT based RT planning for NSCLC.

Our results go along with the findings of Nestle et al. which could show that PET/CT-based reduction of radiotherapy target volume may improve local control without increasing toxicity in patients with locally advanced NSCLC [11]. The correct identification of PET-avid tumor tissue is pivotal as it acts as a starting point for local recurrence: a patterns-of-failure study on NSCLC patients demonstrates local recurrences to occur predominantly within the previous active volume [20].

The multicentric randomized PET-plan study demonstrates the ability of an isotoxic RT dose escalation (mean dose 65.3 Gy vs. 67.3 Gy for the standard vs. the experimental arm) with the use of 18F-FDG PET/CT for planning [10]. Despite smaller target volumes in the PET-arm, locoregional failure was not inferior (30% vs. 17% in the intention-to-treat population after 1 year for the standard vs. experimental arm) [10]. Consistent with our data, no significant impact on OS could be shown. However, a safe RT-volume reduction with improved sparing of healthy lung is likely to result in lower toxicity [21–23].

As shown previously by our group, we found a mean reduction in GTV volume at the time of re-planning of 48.2 mL or 31.1% [24].

Based on our findings, the consistency of centers in performing each standard, regardless of modality, appears to have a prognostic impact. Patients from centers with no stringently applied RT planning procedure experienced a worse outcome compared to centers with consistent RT planning protocols (CT versus PET/CT). In this respect, it seems advisable not to switch too frequently between different adaptive procedures, but to apply a homogenous in-house protocol.

Although not statistically significant patients with a co-registered PET actually numerically outperformed those with staging PET/CT. This is of importance as planning PET/CT are not mandatory in most studies: in RTOG 0617 around 90% of patients had a PET-staging in each arm, whereas its use for RT-planning was only encouraged [16].

Thus, the use of PET/CT in radiation planning (co-registered or in RT treatment position) should be considered in accordance with modern guidelines (ESTRO-ACROP NSCLC). From a public health perspective the application of PET-based RT planning was shown to be cost-effective when compared to CT-based planning [25]. Other concepts such as simultaneous integrated boost need to take account for altering treatment volumes [26]. As variability in the application of planning techniques might be associated with an adverse survival prospect PET-based planning might additionally contribute to a reduced heterogeneity in the definition of target structures [27].

At the time of enrollment to our study, sequential durvalumab maintenance implemented by the PACIFIC trial was not the standard of care for patients with inoperable stage III NSCLC, but needs to be taken into account today [23]. Importantly, PET/CT staging and treatment planning was not mandatory in the PACIFIC trial but should be considered standard of care based on our findings consistent with recent literature [11, 28]. Since increased lung toxicity has been previously reported in patients treated for stage III NSCLC with durvalumab,

reduction of irradiated lung is of increasing importance [29].

From the results of our retrospective study, further direction of future research on RT treatment of patients with locally advanced NSCLC should focus on the possibilities of PET/CT-based RT planning regarding further improvement of local control monitored by PET/CT-based recurrence pattern analyses.

Limitations

In our study the majority of institutions preferred one approach above others with only one centre using multiple planning strategies. In order to gain a broader perspective, the inclusion of more centers with different planning methods should be envisaged. Furthermore, as real-life data were used, there was no standardized method for target volume delineation. Thus, PET information might have been used differently for target volume delineation among study centres. Finally, PET imaging might lead to differences in clinical stages, especially in the amount of lymph node involvement. This might lead to an up- or down-staging of respective cases. However, in our study this might affect our results only in so far as the covariate adjusted models or inclusion criteria are concerned.

Conclusion

A consistent radiotherapy planning strategy should be followed for patients undergoing definitive chemoradiotherapy for stage III NSCLC. The use of PET/CT-based adaptive radiotherapy planning shows comparable oncologic outcomes and should be considered to avoid radio-genic toxicities.

Abbreviations

¹⁸F-FDG PET: ¹⁸F-fluorodeoxyglucose positron emission tomography; CT: Computed tomography; DEGRO: German Society for Radiation Oncology; DKFZ: German Cancer Research Center; DKTK: German Cancer Consortium; NSCLC: Non-small cell lung cancer; RT: Radiotherapy; UICC: Union for International Cancer Control.

Acknowledgements

The yDEGRO Trial Group thanks the German Society for Radiation Oncology (DEGRO) and radiologic oncology working group (ARO) of the German Cancer Society (DKG) for their support. In addition, we would like to thank German Cancer Consortium (DKTK) and the German Cancer Research Center (DKFZ) for providing data base space for the storage of the patient data and Tomas Scripcak as the central data base manager.

Authors' contributions

MM, DM, LK and MO were involved in the conceptualization of the project, data collection and text drafting. DF and DJ critically reviewed and edited the text. DM visualized the data and performed the statistical analysis. All authors read and approved the final manuscript.

Funding

Open Access funding enabled and organized by Projekt DEAL. Matthias Mäurer was supported by the DFG through the OrganAge programme for clinician

scientists (WI 830/12-1). Lukas Käsmann was supported by the Munich Excellence Training Initiative for Physician Scientists (Metiphys) and the Bavarian Cancer Research Center (BZKF).

Availability of data and materials

The datasets generated during and/or analysed during the current study are not publicly available but may become available upon request with permission from corresponding author and host institution following sufficient maturation of data.

Declarations

Ethics approval and consent to participate

The local ethics (Reference number: 2017-15) and data protection committees of the participating institutions approved the study protocol. The study was carried-out in accordance to the declaration of Helsinki of 1975 (as revised in 2008). In accordance with local law, all patients consented to scientific data processing before the initiation of treatment. Additional patient consent was not required as this study was retrospective according to the recommendations of the Institutional Review Board.

Consent for publication

Not applicable.

Competing interests

The authors declare that they have no competing interests.

Author details

¹Department of Radiation Oncology, University Medical Center Jena, Jena, Germany. ²Department of Radiation Oncology, University Hospital, LMU Munich, Munich, Germany. ³Department of Radiation Oncology, University Medical Center Muenster, Muenster, Germany. ⁴Department of Particle Therapy, West German Proton Therapy Centre Essen (WPE), West German Cancer Center (WTZ), University Hospital Essen, Essen, Germany. ⁵Department of Radiation Oncology, Faculty of Medicine, Martin Luther University Halle-Wittenberg, Halle (Saale), Germany.

Received: 22 October 2021 Accepted: 25 January 2022

Published online: 09 February 2022

References

- Chen H, et al. Treatment-related toxicity in patients with early-stage non-small cell lung cancer and coexisting interstitial lung disease: a systematic review. *Int J Radiat Oncol Biol Phys*. 2017;98(3):622–31.
- Molina JR, et al. Non-small cell lung cancer: epidemiology, risk factors, treatment, and survivorship. *Mayo Clin Proc*. 2008;83(5):584–94.
- Huber RM, et al. Interdisciplinary multimodality management of stage III nonsmall cell lung cancer. *Eur Respir Rev*. 2019;28(152):190024.
- Ettinger DS, et al. NCCN guidelines insights: non-small cell lung cancer, Version 5.2018. *J Natl Compr Cancer Netw*. 2018;16(7):807–21.
- Bradley JD, et al. Long-term results of RTOG 0617: a randomized phase 3 comparison of standard dose versus high dose conformal chemoradiation therapy +/- cetuximab for stage III NSCLC. *Int J Radiat Oncol Biol Phys*. 2017;99(2):S105.
- Jaksic N, et al. Optimized radiotherapy to improve clinical outcomes for locally advanced lung cancer. *Radiat Oncol (Lond Engl)*. 2018;13(1):147–147.
- Ostheimer C et al. Prognostic impact of gross tumor volume during radical radiochemotherapy of locally advanced non-small cell lung cancer: results from the NCT03055715 multicenter cohort study of the Young DEGRO Trial Group. *Strahlenther Onkol*. 2021.
- Zheng Y, et al. FDG-PET/CT imaging for tumor staging and definition of tumor volumes in radiation treatment planning in non-small cell lung cancer. *Oncol Lett*. 2014;7(4):1015–20.
- Konert T, et al. PET/CT imaging for target volume delineation in curative intent radiotherapy of non-small cell lung cancer: IAEA consensus report 2014. *Radiother Oncol*. 2015;116(1):27–34.

10. Hoeller U, et al. Late sequelae of radiotherapy. *Dtsch Arztebl Int*. 2021;118(12):205–12.
11. Nestle U, et al. Imaging-based target volume reduction in chemoradiotherapy for locally advanced non-small-cell lung cancer (PET-Plan): a multicentre, open-label, randomised, controlled trial. *Lancet Oncol*. 2020;21(4):581–92.
12. Simsek FS, et al. Is it possible to achieve more accurate mediastinal nodal radiotherapy planning for NSCLC with PET/CT? *J Pak Med Assoc*. 2020;70(1):29–34.
13. Schild SE, et al. Toxicity related to radiotherapy dose and targeting strategy: a pooled analysis of cooperative group trials of combined modality therapy for locally advanced non-small cell lung cancer. *J Thorac Oncol*. 2019;14(2):298–303.
14. Steenbakkens RJHM, et al. Reduction of observer variation using matched CT-PET for lung cancer delineation: a three-dimensional analysis. *Int J Radiat Oncol Biol Phys*. 2006;64(2):435–48.
15. Hallqvist A, et al. Positron emission tomography and computed tomographic imaging (PET/CT) for dose planning purposes of thoracic radiation with curative intent in lung cancer patients: a systematic review and meta-analysis. *Radiother Oncol*. 2017;123(1):71–7.
16. Thureau S, et al. FDG and FMISO PET-guided dose escalation with intensity-modulated radiotherapy in lung cancer. *Radiat Oncol*. 2018;13(1):208.
17. Bradley JD, et al. Long-term results of NRG oncology RTOG 0617: standard- versus high-dose chemoradiotherapy with or without cetuximab for unresectable stage III non-small-cell lung cancer. *J Clin Oncol*. 2020;38(7):706–14.
18. Bradley JD, et al. Standard-dose versus high-dose conformal radiotherapy with concurrent and consolidation carboplatin plus paclitaxel with or without cetuximab for patients with stage IIIA or IIIB non-small-cell lung cancer (RTOG 0617): a randomised, two-by-two factorial phase 3 study. *Lancet Oncol*. 2015;16(2):187–99.
19. Skripcak T, et al. Creating a data exchange strategy for radiotherapy research: towards federated databases and anonymised public datasets. *Radiother Oncol*. 2014;113(3):303–9.
20. Kandi M, et al. Local failure after radical radiotherapy of non-small cell lung cancer in relation to the planning FDG-PET/CT. *Acta Oncol*. 2018;57(6):813–9.
21. Berkovic P, et al. Adaptive radiotherapy for locally advanced non-small cell lung cancer, can we predict when and for whom? *Acta Oncol*. 2015;54(9):1438–44.
22. Wang W, et al. Effect of normal lung definition on lung dosimetry and lung toxicity prediction in radiation therapy treatment planning. *Int J Radiat Oncol Biol Phys*. 2013;86(5):956–63.
23. Hoegen P, et al. Cone-beam-CT guided adaptive radiotherapy for locally advanced non-small cell lung cancer enables quality assurance and superior sparing of healthy lung. *Front Oncol*. 2020;10:564857.
24. Ostheimer C, et al. Prognostic impact of gross tumor volume during radical radiochemotherapy of locally advanced non-small cell lung cancer—results from the NCT03055715 multicenter cohort study of the Young DEGRO Trial Group. *Strahlenther Onkol*. 2021;197(5):385–95.
25. Bongers ML, et al. Pet-based radiotherapy treatment planning is highly cost-effective compared to CT-based planning: a model-based evaluation. *Value Health*. 2013;16(7):A414.
26. Jeter MD, et al. Simultaneous integrated boost for radiation dose escalation to the gross tumor volume with intensity modulated (photon) radiation therapy or intensity modulated proton therapy and concurrent chemotherapy for stage II to III non-small cell lung cancer: a phase 1 study. *Int J Radiat Oncol Biol Phys*. 2018;100(3):730–7.
27. De Ruyscher D, et al. PET scans in radiotherapy planning of lung cancer. *Lung Cancer*. 2012;75(2):141–5.
28. Antonia SJ, et al. Durvalumab after chemoradiotherapy in stage III non-small-cell lung cancer. *N Engl J Med*. 2017;377(20):1919–29.
29. Tonk EHJ, et al. Acute-onset pneumonitis while administering the first dose of durvalumab. *Case Rep Oncol*. 2019;12(2):621–4.

Publisher's Note

Springer Nature remains neutral with regard to jurisdictional claims in published maps and institutional affiliations.

Ready to submit your research? Choose BMC and benefit from:

- fast, convenient online submission
- thorough peer review by experienced researchers in your field
- rapid publication on acceptance
- support for research data, including large and complex data types
- gold Open Access which fosters wider collaboration and increased citations
- maximum visibility for your research: over 100M website views per year

At BMC, research is always in progress.

Learn more biomedcentral.com/submissions

