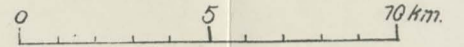


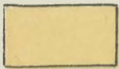

Havelwinkel.

*Lage der Siedlungen.*


Mafsstab 1:200 000.






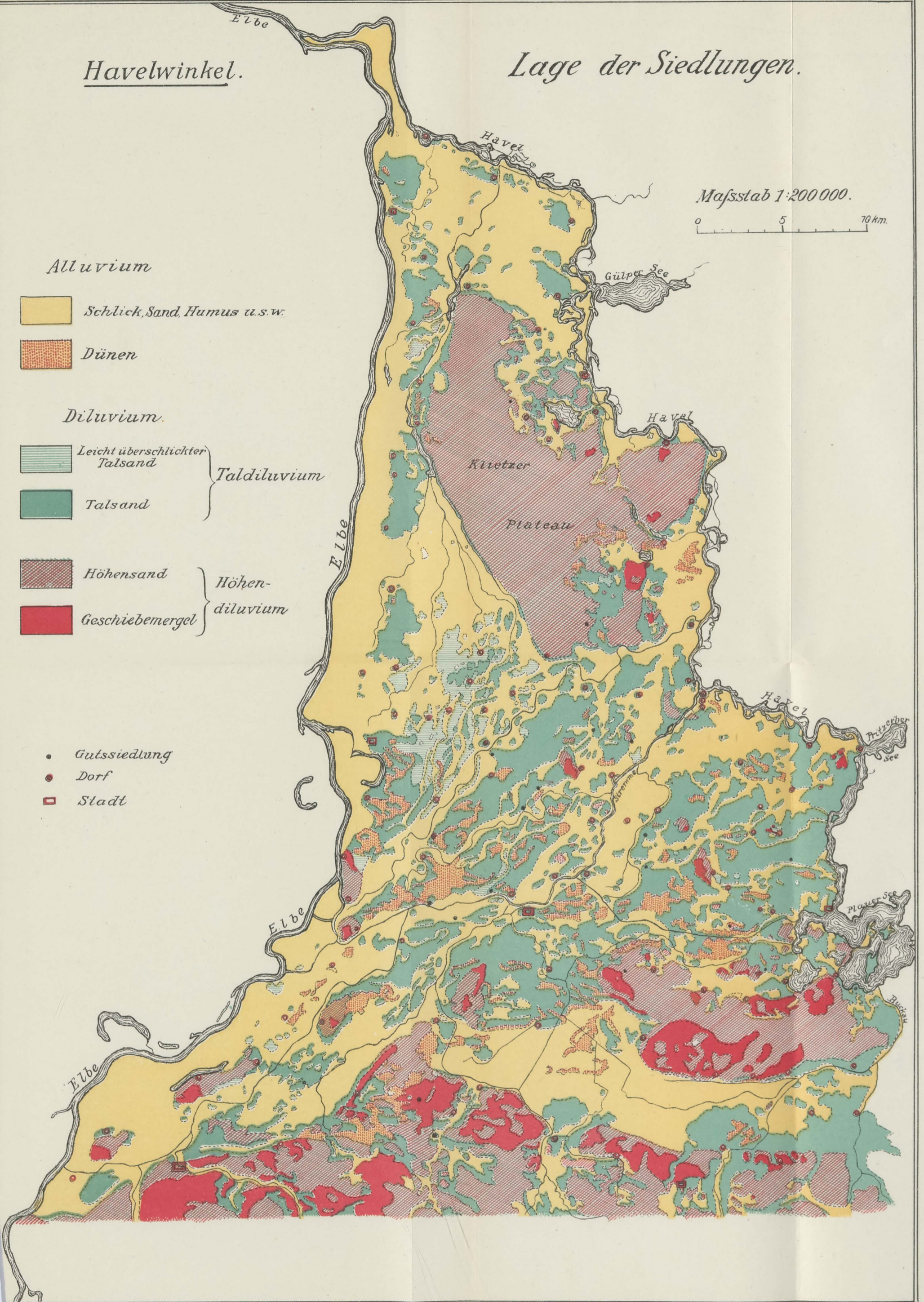
*Alluvium*

-  *Schlick, Sand, Humus u.s.w.*
-  *Dünen*

*Diluvium*

-  *Leicht überschlickter Talsand*
  -  *Talsand*
- } *Taldiluvium*
-  *Höhensand*
  -  *Geschiebemergel*
- } *Höhen-  
diluvium*

-  *Gutssiedlung*
-  *Dorf*
-  *Stadt*

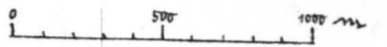




# Grundrissformen der Siedlungen.

K = Kietz.

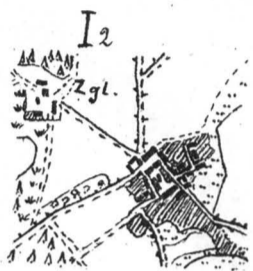
Mafsstab 1:25 000.



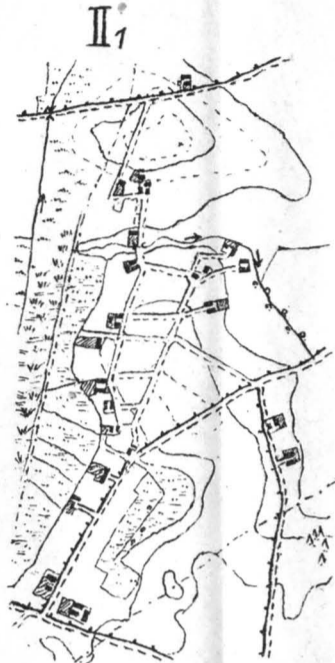
## Havelwinkel



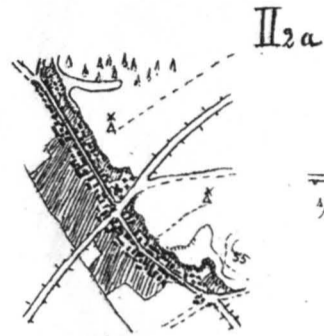
Hagen



Hohenbellin



Neu-Wartensleben



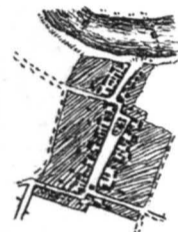
Schmetzdorf



Neu-Bensdorf



Göttlin



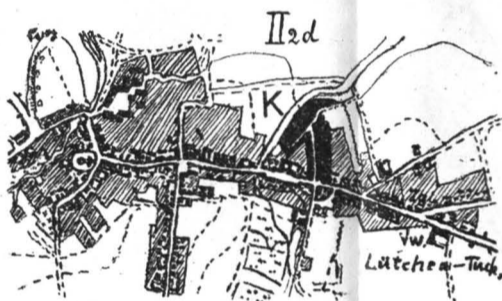
Bahritz



Böke



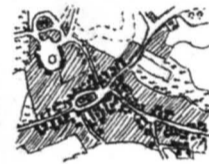
Gollwitz



Tucheim



Kl-Walkow



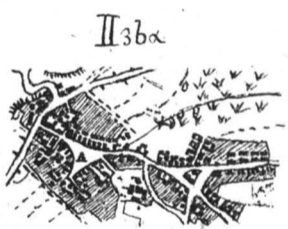
Zabakuck



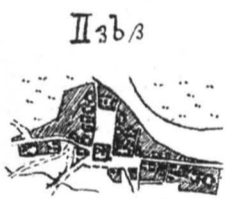
Kuhlhausen



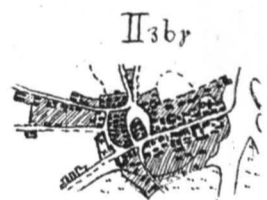
Ferchels



Hohenseeden



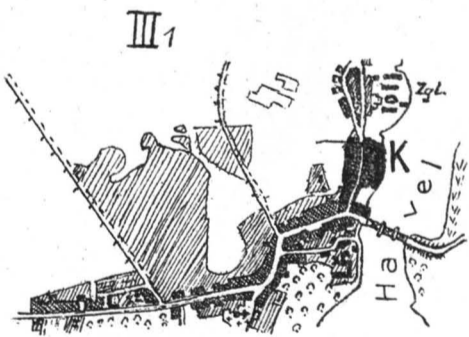
Grütz



Bützer



Parey



Plaue



Sandau



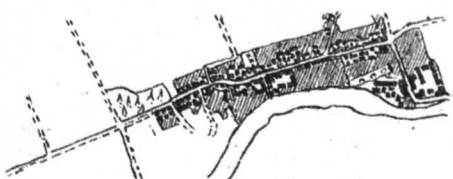
Genthin



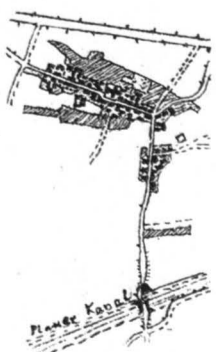
Havelberg

## Einfache Verlängerung. Entstehung einer T-Form

## Einfluss der Verkehrswege auf die Entstehung des Ortes „Neue Schleuse“



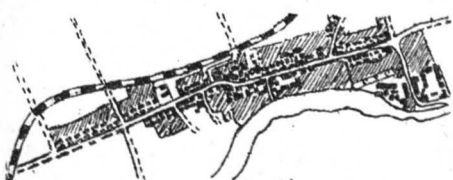
Brettin 1880



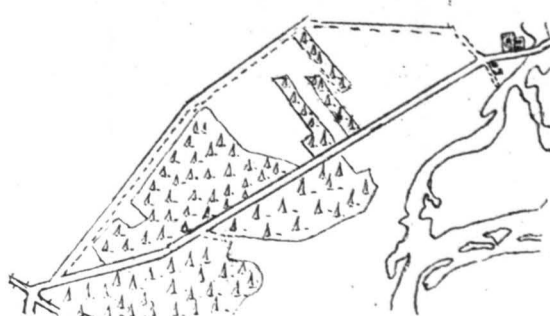
Wottersdorf 1880



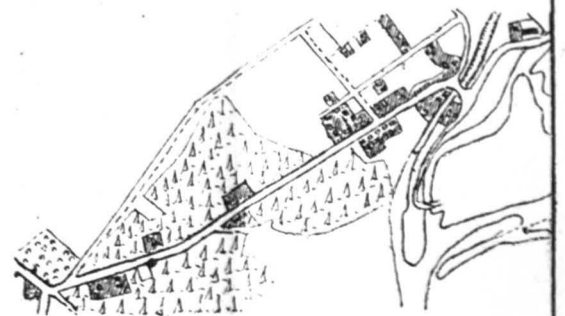
Wottersdorf 1904



Brettin 1900



Chaussee bei Steckelsdorf 1880



Chaussee bei Steckelsdorf 1903