

MALLOPHAGA  
von  
GRAUEN Vögeln

V

2A2 B 273 (Jll. 5)

ULB Halle 37  
000 065 668



AU



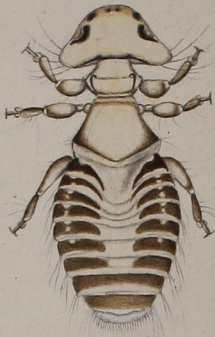


XIV. 11. 12.



I

mas



I

femina



Lath. Menopon mesoleucum.  
Cervi cornicis  
1797. 1814.

XV. 5



I

Lath. Menopon facullare,  
Suarai vulgaris.  
III. 309. 1799 1815.

XVII. 5.

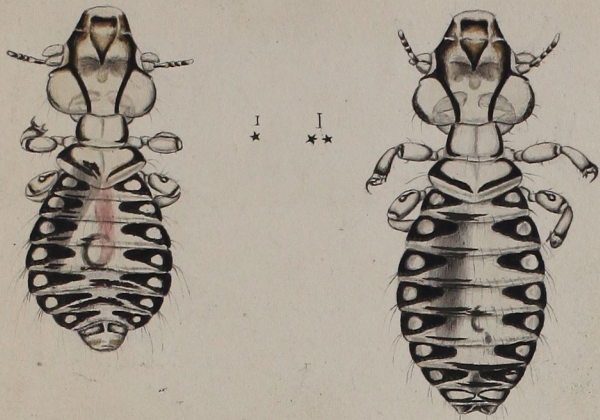


Lath. Laemolothecum atrum.  
Falicæ atræ  
I. 34. 17149.





X, 7. 8.



*Phil. Docophorus ocellatus.*  
*Corvi cornicis. 1814.*

VII, 1.



*Phil. Nirmus uncinosus.*  
*Corvi cornicis.*

X, 4.



*Phil. Docoph. guttatus*  
*Corvi monedulae*

VII, 2. 3.



*Phil. Nirmus varius*  
*Corvi coronae & monedulae*

*Phil. Docoph. bisignatus. Fide fulcr. V. 19.*  
*— — — phenophora. Pl. d. leucorod. V. 101.*  
*XI, 26.*

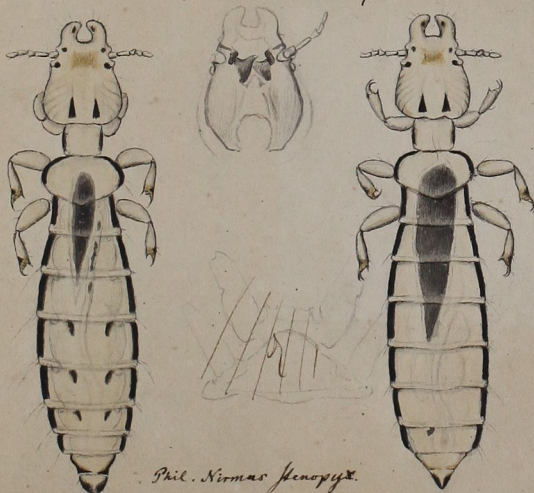


*Phil. Docophorus portusius*  
*Fulcr. atrae.*



*I*  
*♀.*

VIII. 6. 7.



*Phil. Nirmus fenopyx.*  
*Anatis rufinae.*  
*1826.*

XVII. 4.



*Phil. Lepurus luridus*  
*W. 44.*  
*Fulcr. chloropodis.*

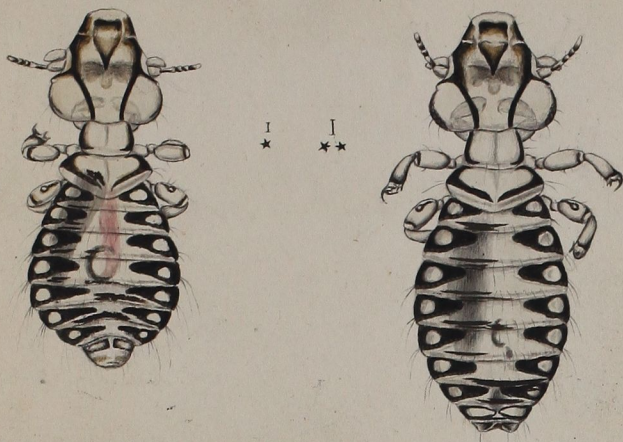








X, 7. 8.



*Phil. Docophorus ocellatus.*  
*Corvi cornicis. 1874.*

VII, 1.



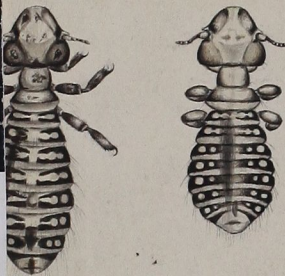
*Phil. Nirmus uncinorus.*  
*Corvi cornicis.*

X, 4.



*Phil. Docoph. guttatus*  
*Corvi monedulae*

VII, 2. 3.



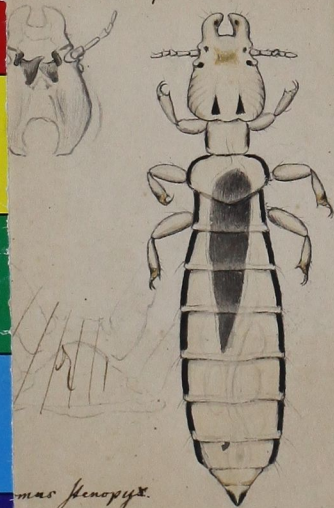
*Nirmus varius*  
*Corvi corones & monedulae*

*Phil. Docoph. bisignatus. Fides falcin. V. 19.*  
*— — — sphenophorus. Plat. leucorhos. V. 101.*  
*XI, 26.*



*Phil. Docophorus portusius*  
*Fulic. atrae.*

VIII. 6. 7.



*Nirmus fenopis.*  
*stratis rufinae.*  
*1886.*

XVI. 4.



*Phil. Lipcurus luridus*  
*W. 44.*  
*Fulic. chloropidis.*

