

**II**

ZAR B 273 (Teil 2)

ULB Halle 3/7  
000 065 722



T. XIV. F. 1.



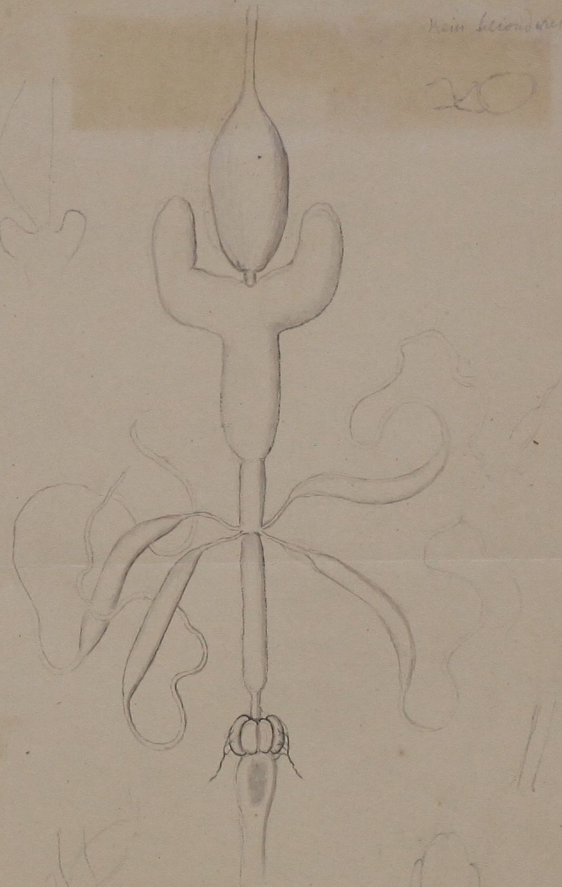
DARMKANAL  
von  
Menopon mesoleucum

*Tubus cibarius Lathrei mesoleuci, Fuchs  
1877, p. 10, Taf. 1, Fig. 1.*

E. 33

*kein bestimmtes Helyporus*

20



*Lithem.*

DARMKANAL  
von  
Colpocephalum flavescens

*manuscript*



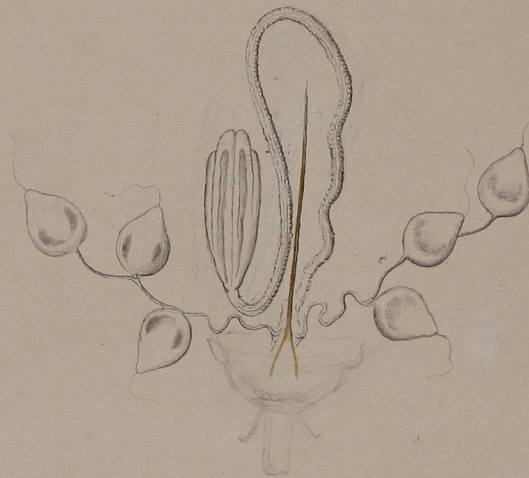
T. XIX F. 6



*Menopon mesoleucum* Lillj. mesoleucum

WEIBLICHE GONADEN  
von  
Menopon mesoleucum

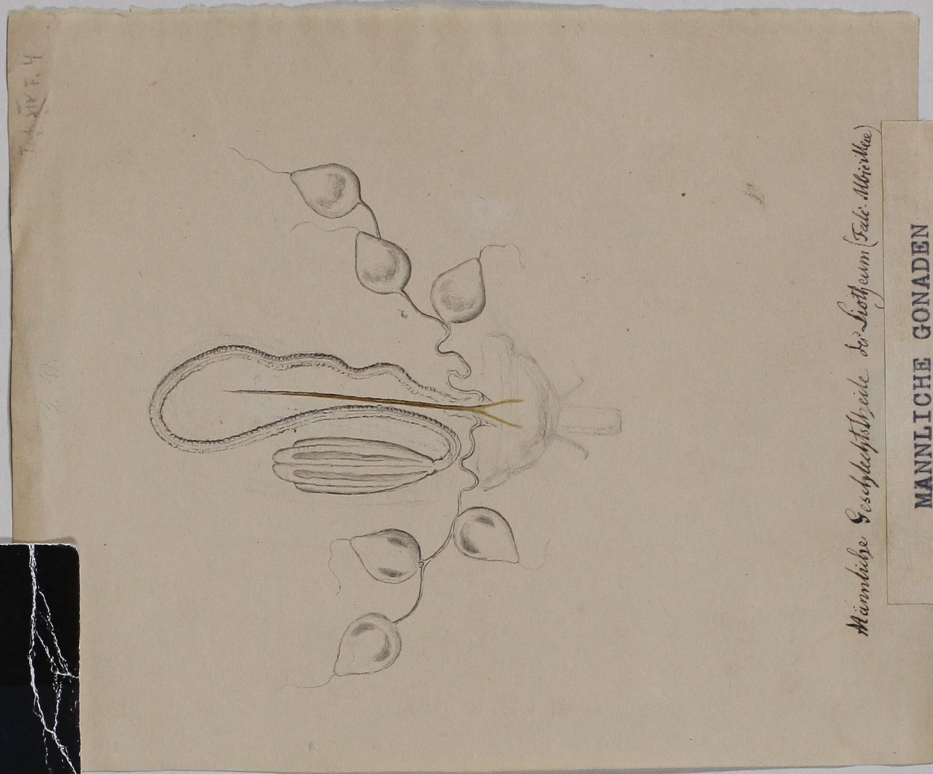
T. XIX F. 4



*Colpocephalum flavescens* (Falc.) Albr. Klug

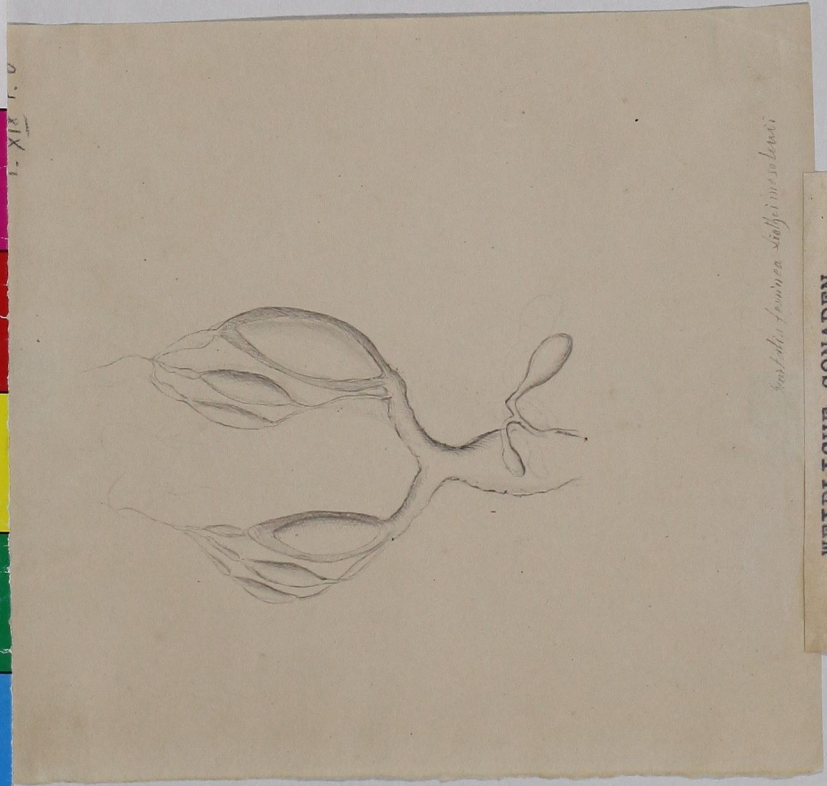
MÄNNLICHE GONADEN  
von  
Colpocephalum flavescens





*Männliche Geschlechtsorgane des Lichthens (Falk. Albrickee)*

**MÄNNLICHE GONADEN**  
 von  
*Colpocephalum flavescens*



*weibliche Gonaden Menopon mesoleucum*

**WEIBLICHE GONADEN**  
 von  
*Menopon mesoleucum*

