

MALLOPHAGA  
Formen  
von  
Gleichen VOGELARTEN

VIII

2AR B 273 (JH. 8)

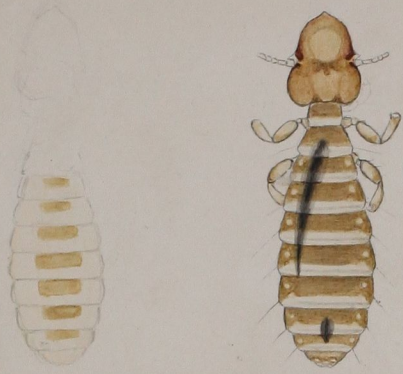
ULB Halle 3/7  
000 065 730



411



VIII, 3.



*Phil. Nimus subcurpidatus.*  
*Corac. garrulae.* 1836.  
V. 103.

VIII, 4



*Phil. Nimus.*  
*Coracias garrulae.*  
III. 338.

X, 7,



*Phil. Docoph. brevicollis*  
*Vult. Zinerei*  
IV. 26. 1816.

XVII, 5



*Phil. Lipcurus 4-pustulatus.*  
*Vult. Zinerei.*  
Conf. IV. 25.

VIII, 2.



*Phil. Nimus fuscus*  
*Falco. buteonis.*

IX, 8.



*Phil. Docophor. platystomus.*  
*Falc. buteonis.*

XIV. 9. 10



I  
1/2 *Loth. Menopon. branneum.* I ♀.  
*Corvi caryocatactis.* 1814. IV. 100.  
II. 62.

X, 6



I  
*Phil. Docoph. crassipes.*  
*Corvi caryoc.*

VII, 10



I  
*Phil. Nirmus olivaceus.*  
*Corvi caryocatactis.*

XI, 3. 4

6

2.



I  
*Phil. Docoph. auratus*  
*Isolop. rusticolae.* 1814.

XVI, 10. 11



I  
*Philopst. Lipeurus kelvolus* I  
*Isolop. rusticolae.*

XVII, 12.



I  
*Loth. Menopon. icterum.*  
*Isolop. rusticolae.*  
II. 232.



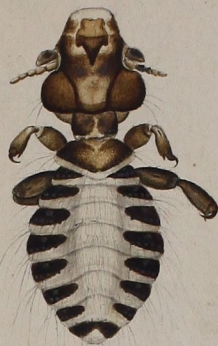


XIV, 9, 10



I  
II  
*Leoth. Menopon. branneum.* I ♀.  
*Corvi caryocatactis.*  
II. 62. 1817. IV. 100.

X, 6



I  
*Phil. Docoph. inassipes.*  
*Corvi caryoc.*

VII, 10



I  
*Phil. Nirmus olivaceus.*  
*Corvi caryocatactis.*

XI, 9, 4

2



I  
*h. auratus*  
*Isolop. rusticolae.* 1814.

XVI, 10, 11



I  
*Philopel. Lipeurus kelvotus* I  
*Isolop. rusticolae.*

XVII, 12.



I  
*Menopon. icterum.*  
*Isolop. rusticolae.*  
II. 232.

